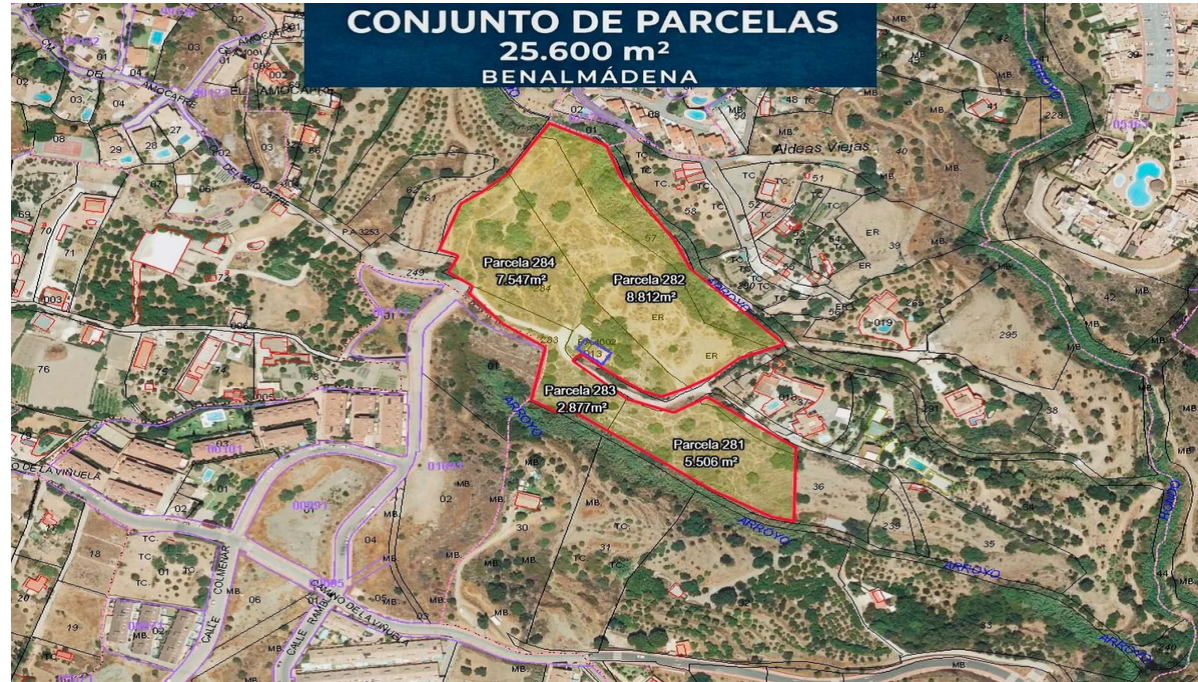


Продажа - Участок - Benalmadena Costa
550.000€

www.arbatstates.com
+34 606 84 36 45
+34 602 51 80 97
info@arbatstates.com



Ref.-ID: R5347486

Benalmadena Costa

Участок



186 m2



25600 m2

EXCLUSIVE INVESTMENT – 50% UNDIVIDED SHARE OF A 26,000 m² PLOT WITH SEA VIEWS IN BENALMÁDENA Sale of a 50% undivided share of a set of four plots with an existing house and open sea views. This real estate asset with strong appreciation potential is located in the municipality of Benalmádena, in the La Viñuela area, one of the natural zones with the highest urban development potential on the Costa del Sol. **MAIN PROPERTY DATA** • Total land area: approximately 26,262 m² according to Land Registry • Measured area: approximately 25,602 m² • Number of plots: 4 registered plots • Urban classification: Non-Sectorized Developable Land (SUNS) • Existing two-storey house with 128 m² of usable space, plus terrace, basement, storage room and parking for 4 cars with first occupancy license (LPO). • Elevated location with open views to the sea and surrounding landscape **PRICE** €550,000 for 50% ownership. This price is significantly below the potential value of the asset, offering an attractive entry opportunity into developable land in one of the most dynamic real estate markets on the Costa del Sol. **DEVELOPMENT POTENTIAL** The land is classified as non-sectorized developable land, which represents a strategic reserve for the future urban growth of the municipality. Possible investment strategies include: • Urban development through a Sectorization Plan • Development of a residential project with detached villas • Integration into future municipal urban developments • Medium- to long-term land banking strategy **INVESTOR PROFILE** This asset is particularly suitable for property developers, real estate investment funds, family offices and value-add investors. **ADDITIONAL INFORMATION** The transaction is structured as the sale of a 50% undivided ownership share. Full legal, registry and urban planning documentation is available for investor review. Request the complete investment dossier.

Расположение

- ✓ Деревня
- ✓ Рядом с морем

ОРИЕНТАЦИЯ

- ✓ Юг
- ✓ Северо-запад

Состояние

- ✓ Среднее

Климат-контроль

- ✓ Кондиционер
- ✓ Камин

ВИД

- ✓ Море
- ✓ Горы

Особенности

- ✓ Встроенные шкафы
- ✓ Приватная терраса
- ✓ Кладовка
- ✓ Подсобное помещение
- ✓ Барбекю
- ✓ Подвал

Кухня

- ✓ Полностью оборудованная

Сад

- ✓ Приватный

меры безопасности

- ✓ Сигнализация

Парковка

- ✓ Гараж

Коммунальные услуги

- ✓ Электричество
- ✓ Питьевая вода

Категория

- ✓ Инвестиции