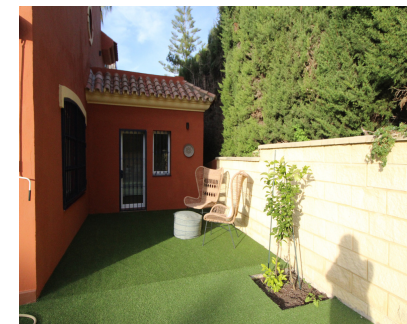


Продажа - Дом - Atalaya
690.000€

www.arbatestates.com
+34 606 84 36 45
+34 602 51 80 97
info@arbatestates.com



Ref.-ID: R5251573

Atalaya

Дом

Коммунальные: 1,380 EUR / год

ИБИ: 680 EUR / год

Мусор: 185 EUR / год



4



3



285 m2



250 m2

Large house ready to go in to live; From the beautiful front garden and through a stone staircase you access the entrance of the house open to a large living room with fireplace that has plenty of light all day as it is south orientation; on this floor there is also a separate kitchen, with small dining room, that gives the access garden, a guest toilet and a small extra room perfect for office, or for room to play, from which you pass to the private garage covered with The house is the Lomas de Monte Biarritz one of the most beautiful and well-kept urbanizations in the area; On the first floor there are 3 bedrooms, the master with en-suite bathroom, closet area and access to two terraces one of them huge solarium type; , the other two rooms also have fitted wardrobes and share another bathroom; the house has a more attic floor where a small room is located with a large terrace that enjoys wide views. The house has recently been completely renovated by architects; so this list to enter to live and by its orientation, has a lot of light all day; the community is very well maintained and managed. It has large and beautiful gardens and 2 swimming pools, one of adults and another of children; It is a perfect house for families with children, since there is a lot of atmosphere; and it is perfect for living all year round; since it is next to all services: The Guadalmina Shopping Centre also the Atalaya and San José schools in Guadalmina are next to it; Call us and we teach you!!

Расположение

- ✓ Рядом с гольф-полем
- ✓ Рядом с портом
- ✓ Рядом с магазинами
- ✓ Рядом с морем
- ✓ Рядом с городом
- ✓ Близко к школам

Особенности

- ✓ Крытая терраса
- ✓ Встроенные шкафы
- ✓ Рядом с транспортом
- ✓ Приватная терраса
- ✓ Солярий
- ✓ Игровая комната
- ✓ Подсобное помещение
- ✓ Деревянные полы
- ✓ Мраморные полы
- ✓ Двойные стеклопакеты

ОРИЕНТАЦИЯ

- ✓ Юг

Мебель

- ✓ Без мебели

Состояние

- ✓ Отличное
- ✓ Хорошее
- ✓ Недавно отремонтированная
- ✓ Новое строительство

Кухня

- ✓ Частично оборудованная

бассейн

- ✓ Общий

Сад

- ✓ Приватный

Климат-контроль

- ✓ Камин

меры безопасности

- ✓ Огражденный комплекс
- ✓ Электрические жалюзи

ВИД

- ✓ Сельская местность
- ✓ Панорамный
- ✓ Сад
- ✓ Бассейн

Парковка

- ✓ Приватная