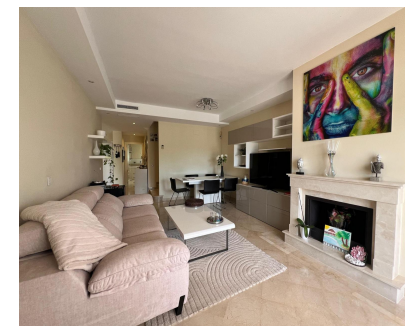
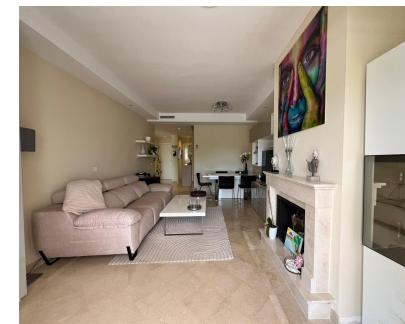


Долгосрочная Аренда - Апартамент - Nueva Andalucía 4.000€ / Месяц



Ref.-ID: R5369443

Nueva Andalucía

Апартамент



Welcome to a spacious and beautifully presented apartment in the sought-after Aloha Royal community, located in the heart of Nueva Andalucía's Golf Valley. Offering approximately 130 m² of well-distributed living space, this three-bedroom, three-bathroom residence combines comfort, functionality, and a relaxed Mediterranean lifestyle. The apartment is bright throughout, with large glass doors connecting the interior living areas to multiple terraces, creating a seamless indoor-outdoor flow. A key feature of the property is its three private terraces, offering a variety of spaces to relax, dine, and entertain. Whether enjoying outdoor meals with the built-in barbecue or unwinding in the lounge areas, these terraces add real depth to the home. From here, you can also enjoy views towards La Concha mountain, providing a distinctive Marbella backdrop. Inside, the apartment features a welcoming living room with a fireplace, a dedicated dining area, and a fully equipped kitchen, including a wine fridge. The bedrooms are generously sized and well distributed, offering both comfort and privacy for residents and guests. The property has been thoughtfully updated with new furniture and practical upgrades throughout, making it ready to enjoy from day one. Set within a gated community, residents benefit from well-maintained gardens and a communal pool, all within a peaceful and established setting. Aloha Royal is ideally positioned close to a wide selection of golf courses, restaurants, shops, and everyday amenities, with Puerto Banús just a short drive away. This is a well-balanced home that combines indoor space, outdoor living, and a prime location, ideal as a holiday residence or a comfortable year-round base in Marbella.

Расположение

- ✓ Рядом с гольф-полем
- ✓ Рядом с магазинами
- ✓ Рядом с городом
- ✓ Близко к школам

Состояние

- ✓ Отличное

бассейн

- ✓ Общий

Климат-контроль

- ✓ Кондиционер
- ✓ Камин

ВИД

- ✓ Горы
- ✓ Панорамный
- ✓ Сад
- ✓ Бассейн
- ✓ Город

Особенности

- ✓ Крытая терраса
- ✓ Лифт
- ✓ Встроенные шкафы
- ✓ Рядом с транспортом
- ✓ Приватная терраса
- ✓ WiFi
- ✓ Мраморные полы
- ✓ Барбекю

Мебель

- ✓ Полностью меблированный

Кухня

- ✓ Частично оборудованная

Сад

- ✓ Общественный

меры безопасности

- ✓ Огражденный комплекс

Парковка

- ✓ Общая

Коммунальные услуги

- ✓ Электричество
- ✓ Питьевая вода

Категория

- ✓ Элитная