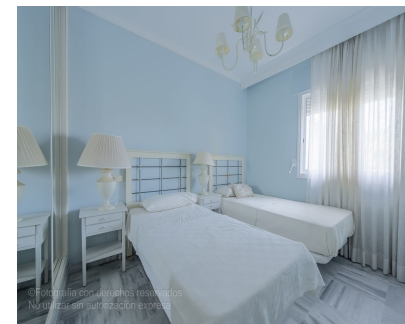


Продажа - Апартамент - Puerto Banús
525.000€



Ref.-ID: R5131972

Puerto Banús

Апартамент

Коммунальные: 1,224 EUR / год

ИБИ: 929 EUR / год



2



2



80 m2

Bright two-bedroom, two-bathroom penthouse located in La Dama de Noche, one of the most exclusive and sought-after residential complexes in the area. Just one kilometre from the beach and Puerto Banús, it offers the tranquillity of a residential setting along with the convenience of having all services close at hand. Situated on the fourth floor with lift access, it features 81 m² of interior space laid out in a practical and functional way, along with an impressive 77 m² southeast-facing terrace, perfect for enjoying the sun, relaxing outdoors, or spending time with family and friends, all while taking in the pleasant open mountain views. Inside, the marble floors and bathrooms, generous fitted wardrobes, and a spacious, bright living room create a warm and comfortable atmosphere for everyday living. The property includes a parking space and is set within a community offering two swimming pools, extensive landscaped gardens, a children's play area, 24-hour security, and concierge service. Its location provides excellent connections to Marbella, San Pedro, and Nueva Andalucía, and is surrounded by shops, restaurants, and sports facilities, making it an ideal choice both as a permanent residence or an investment., Marbella, Costa del Sol. Built 0 m². Setting : Commercial Area, Close To Golf, Close To Port, Close To Shops, Close To Sea, Close To Schools, Marina, Close To Marina, Urbanisation. Orientation : East. Condition : Good. Pool : Communal. Views : Mountain, Panoramic. Features : Lift, Fitted Wardrobes, Near Transport, Private Terrace, Paddle Tennis, Tennis Court, Ensuite Bathroom, Marble Flooring, Restaurant On Site, Near Church. Furniture : Optional. Kitchen : Partially Fitted. Garden : Communal. Security : Gated Complex, Entry Phone, 24 Hour Security. Parking : Underground, Private. Category : Resale.

Расположение

- ✓ Коммерческая зона
- ✓ Рядом с портом
- ✓ Рядом с магазинами
- ✓ Рядом с морем
- ✓ Близко к школам
- ✓ Порт
- ✓ Рядом с портом
- ✓ Урбанизация

ОРИЕНТАЦИЯ

- ✓ Восток

Состояние

- ✓ Хорошее

бассейн

- ✓ Общий

ВИД

- ✓ Горы
- ✓ Панорамный

Особенности

- ✓ Лифт
- ✓ Встроенные шкафы
- ✓ Рядом с транспортом
- ✓ Приватная терраса
- ✓ Падлл теннис
- ✓ Теннисный корт
- ✓ Ванная комната
- ✓ Мраморные полы
- ✓ Ресторан на территории
- ✓ Возле церкви

Мебель

- ✓ По желанию

Кухня

- ✓ Частично оборудованная

Сад

- ✓ Общественный

меры безопасности

- ✓ Огражденный комплекс
- ✓ Домофон
- ✓ Охрана 24 часа

Парковка

- ✓ Подземная
- ✓ Приватная

Категория

- ✓ Перепродажа