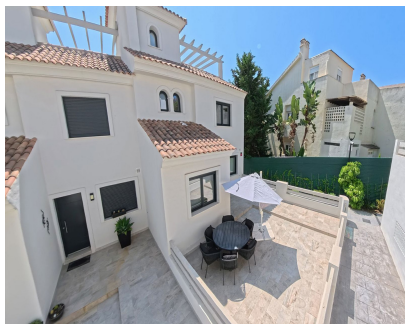


Продажа - Дом - Estepona  
495.000€



**Ref.-ID: R5084074**

**Estepona**

**Дом**

**Коммунальные: 1,068 EUR / год**



**3**



**3**



**131 m2**

Located within the exclusive El Campanario area of Estepona, this elegant corner townhouse is part of a peaceful development of just 47 homes. Designed with traditional Andalusian architecture, the property enjoys spacious terraces and an abundance of natural light throughout. Spanning 131.34 m<sup>2</sup> across three levels, the townhouse features three bedrooms, two bathrooms, a guest toilet, a bright living-dining area, and a fully equipped kitchen. Outdoor spaces include a welcoming entrance terrace, a second terrace off the main living area, and a rooftop solarium with a pergola—ideal for relaxing or entertaining. The home also includes a basement, two private parking spaces, and two storage rooms as well. Residents of this charming complex have access to beautifully landscaped gardens and a communal swimming pool. Ideally situated, the property is just 5 minutes from San Pedro Alcántara, 15 minutes from Puerto Banús, and within easy reach of Marbella town centre and Estepona. Malaga International Airport is conveniently located only 45 minutes away as is Gibraltar Airport. The home is also surrounded by some of the best golf courses in the area, making it perfect for golf enthusiasts.

**Расположение**

- ✓ Коммерческая зона
- ✓ Рядом с магазинами
- ✓ Рядом с морем
- ✓ Близко к школам
- ✓ Урбанизация

**Мебель**

- ✓ По желанию

**ОРИЕНТАЦИЯ**

- ✓ Восток
- ✓ Запад

**Кухня**

- ✓ Полностью оборудованная

**Состояние**

- ✓ Отличное

**Сад**

- ✓ Общественный

**бассейн**

- ✓ Общий

**меры безопасности**

- ✓ Огражденный комплекс

**Климат-контроль**

- ✓ Кондиционер

**Парковка**

- ✓ Подземная

**Особенности**

- ✓ Крытая терраса
- ✓ Приватная терраса
- ✓ Солярий
- ✓ Кладовка
- ✓ Подсобное помещение
- ✓ Ванная комната
- ✓ Подвал
- ✓ Оптическое волокно

**Категория**

- ✓ Гольф
- ✓ Дома для отдыха
- ✓ Инвестиции
- ✓ Элитная