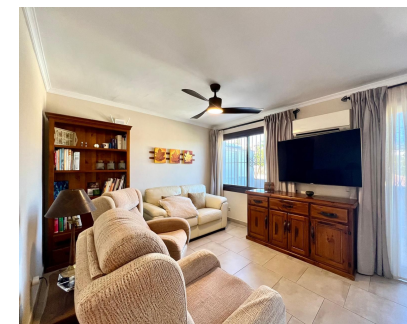


Продажа - Дом - Elviria
395.000€



Ref.-ID: R5032366

Elviria

Дом

Коммунальные: 264 EUR / год

ИБИ: 624 EUR / год

Мусор: 278 EUR / год



2



1



156 m2

Elviria. Beautiful and charming townhouse in Pueblo Sueco. This townhouse has been refurbished to good quality standards, It has an inviting west patio with a lot of space for al fresco dining. There is a small but convenient storage area. Entering the house you have a laundry and storage room and the fully equipped kitchen with a combination of gas and electric cookers. The living room has large windows, good space for sofa relaxing area and a large dining table. From the living room you access a lovely morning terrace, perfect to enjoy your breakfast! The stairs take you to the lower floor where we find a good sized bathroom with shower and bathtub. Two lovely bedrooms both with access to the ample east patio on the lower floor. There is a private pool club in the area where you can be a member for a yearly fee. Perfect home for a family or as a holiday home in a quiet area in the centre of Elviria. Just a few minutes from the commercial area, schools and the sandy beaches. The neighbours are a combination of local and international nationalities. The property is located within walking distance to all amenities (supermarkets, banks, restaurants, pharmacies, hairdressers, postal service, dentists, doctors,...) It is close to the popular beaches in Marbella and most famous beach clubs such as Nikki Beach at hotel Don Carlos. There are as well several 18 hole golf courses like Santa Maria Golf, Santa Clara, Rio Real and Marbella Golf. Marbella has become a brand in Europe and all over the world with 320 days of full sun a year and total of 2900 hours of sun.

ОРИЕНТАЦИЯ

- ✓ Восток
- ✓ Запад

Парковка

- ✓ Гараж

бассейн

- ✓ Общий

Коммунальные услуги

- ✓ Электричество
- ✓ Газ

Климат-контроль

- ✓ Кондиционер

Категория

- ✓ Перепродажа

Особенности

- ✓ Приватная терраса

Мебель

- ✓ По желанию

Кухня

- ✓ Полностью оборудованная