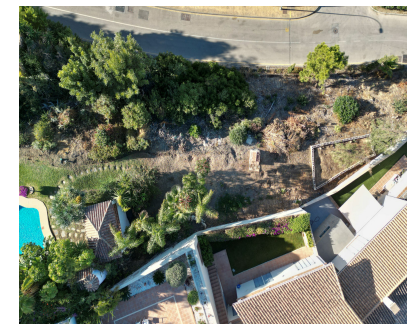


Продажа - Участок - Benahavís
795.000€



Ref.-ID: R4855243

Benahavís

Участок



512 m2

This is a very rare opportunity to purchase an elevated plot with golf, mountain and sea views located within the peaceful urbanisation of Puerto del Almendro. This contemporary villa project has been designed by renowned Marbella architect Cesar de Leyva and he has created a stunning, easily maintained home which would make an excellent second home or holiday rental. This modern, south and south west facing house is distributed over four floors, with terraces on all levels and a rooftop terrace where you can enjoy breathtaking views of Gibraltar and North Africa. The design includes a lift to all floors and a private pool on the upper terrace. The project can be adapted to suit a buyers requirements and has the preliminary planning application in place. The views are protected ensuring a safe haven investment. Puerto del Almendro sits below the Serranía de Ronda mountain range next to Los Arqueros golf and country club and is surrounded by exclusive residential urbanisations. It is just a 5 minute drive to San Pedro de Alcántara and 10 minutes to Puerto Banús.

Расположение

- ✓ Рядом с гольф-полем
- ✓ Рядом с магазинами
- ✓ Рядом с городом
- ✓ Близко к школам

ВИД

- ✓ Море
- ✓ Горы
- ✓ Гольф
- ✓ Сельская местность

Особенности

- ✓ Рядом с транспортом