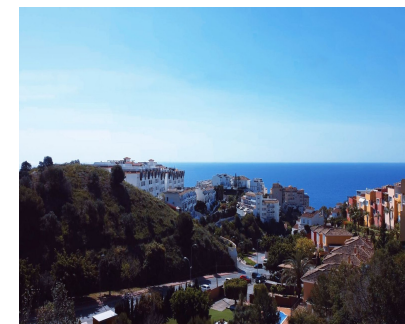
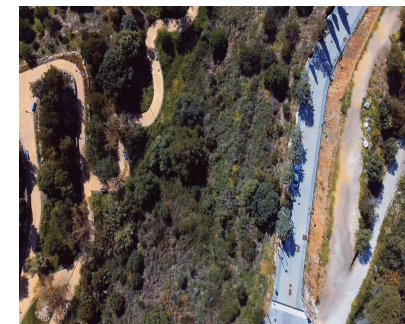


Продажа - Участок - Benalmadena Costa
720.000€



Ref.-ID: R4193743

Benalmadena Costa

Участок



1991 m2

UNIQUE INVESTMENT OPPORTUNITY in Benalmádena Costa. SITUATED in La Capellanía next to Reserva del Higuero. Totally surrounded by urbanised green areas. SEA VIEWS. Plot 400 metres from the beach of Carvajal. TO BUILD 1, 2 or 3 VILLAS. Land classified as type U1 single-family, several options to build, all of them with large gardens, swimming pools, terraces and independent garages. URBAN DATA Surface area: 1991 m2 Occupation: 25% 497m2 Buildable area: 0,38 756m2 Minimum plot to segregate: 600m2 CONTACT us without obligation to visit the property and obtain the technical and economic report of the investment. We provide FREE advice from our team of architects who will inform you of the different options to get the most out of the property. ABOUT BENALMADENA Located on the Costa del Sol, Benalmadena is one of the most attractive areas for property investment in Spain, thanks to its growing tourist and residential demand. With an excellent climate, quality beaches and a modern infrastructure, the town offers a high quality of life surrounded by the best services. The marina and the popular Paloma Park reinforce its attractiveness, while the development of new housing and tourist projects increases its long-term value. Benalmádena is an excellent option for investors looking to diversify their portfolio in an established and expanding destination. (*) Real estate fees included in the sale price. Not included expenses inherent to the purchase such as ITP, AJD, notary, registry, etc.

Расположение

- ✓ Пригородная
- ✓ На побережье
- ✓ Рядом с морем
- ✓ Рядом с городом

ОРИЕНТАЦИЯ

- ✓ Восток
- ✓ Юг

Состояние

- ✓ Новое строительство

бассейн

- ✓ Приватный

Климат-контроль

- ✓ Кондиционер

ВИД

- ✓ Море
- ✓ Горы
- ✓ пляж
- ✓ Сельская местность
- ✓ Панорамный
- ✓ Лес
- ✓ Улица

Особенности

- ✓ Крытая терраса

Коммунальные услуги

- ✓ Электричество
- ✓ Питьевая вода
- ✓ Телефон