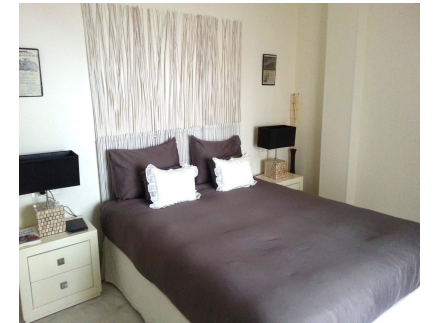


Long Term Rental - Apartment - Valle Romano
1.450€ / Month

www.arbatstates.com
+34 606 84 36 45
+34 602 51 80 97
info@arbatstates.com



Ref.-ID: R5308798

Valle Romano

Apartment



2



2



114 m2

Spacious Ground Floor Apartment with Exclusive Garden Use – Valle Romano Golf, Estepona €297,000 | Long-term rental option: €1,450/month furnished (available from 1 March)

Key Features 114 m² built area 2 bedrooms | 2 bathrooms 12 m² private terrace at garden level + exclusive use of communal garden Underground parking space included South facing | Built 2009 | Excellent condition | Energy Rating B

Description Discover this beautiful and exceptionally bright ground-floor exterior apartment in the exclusive Valle Romano Golf & Resort, one of Estepona’s most prestigious golf communities. All living areas (except one bathroom) open directly onto a lush garden with exclusive use rights – perfect for al fresco dining, relaxing or even adding your personal touch. The large open-plan living room features floor-to-ceiling windows flooding the space with natural light. The master suite is a real highlight: generous bedroom with dressing area (two fitted wardrobes), direct access to the 12 m² terrace and a luxurious 10 m² en-suite bathroom. The second bedroom also boasts a fitted wardrobe and full-height glazing. Additional storage includes a large hallway wardrobe. The fully equipped kitchen comes with all appliances and a separate utility/drying area. Throughout the home you’ll enjoy high-quality marble flooring, electric blinds, ducted air conditioning (hot/cold) and the option of solar-assisted hot water. Resort Amenities 18-hole championship golf course (par 71, designed by Cabell B. Robinson), two large swimming pools + two children’s pools, children’s playground, gym, three paddle tennis courts, beautiful gardens and panoramic sea & mountain views. Peaceful elevated location yet only 8-10 minutes’ drive from vibrant Estepona centre, port and beaches. Ideal as a permanent home, second residence or high-yield investment (current rental yield approx. 5.8% gross). Viewing highly recommended – contact us today to arrange a private visit!

- | | | | | | |
|---|---|--|--|---|---|
| <p>Setting</p> <ul style="list-style-type: none"> ✓ Frontline Golf ✓ Close To Golf ✓ Close To Shops ✓ Close To Sea ✓ Close To Town ✓ Close To Schools ✓ Urbanisation | <p>Orientation</p> <ul style="list-style-type: none"> ✓ South | <p>Condition</p> <ul style="list-style-type: none"> ✓ Excellent | <p>Pool</p> <ul style="list-style-type: none"> ✓ Communal ✓ Children`s Pool | <p>Climate Control</p> <ul style="list-style-type: none"> ✓ Air Conditioning | <p>Views</p> <ul style="list-style-type: none"> ✓ Garden |
| <p>Features</p> <ul style="list-style-type: none"> ✓ Covered Terrace ✓ Lift ✓ Fitted Wardrobes ✓ Near Transport ✓ Private Terrace ✓ WiFi ✓ Paddle Tennis ✓ Ensuite Bathroom ✓ Access for people with reduced mobility ✓ Marble Flooring ✓ Double Glazing ✓ Fiber Optic | <p>Furniture</p> <ul style="list-style-type: none"> ✓ Fully Furnished | <p>Kitchen</p> <ul style="list-style-type: none"> ✓ Fully Fitted | <p>Garden</p> <ul style="list-style-type: none"> ✓ Communal | <p>Security</p> <ul style="list-style-type: none"> ✓ Gated Complex ✓ Electric Blinds ✓ Alarm System | <p>Parking</p> <ul style="list-style-type: none"> ✓ Underground ✓ Garage ✓ Covered ✓ Private |
| <p>Utilities</p> <ul style="list-style-type: none"> ✓ Photovoltaic solar panels | | | | | |