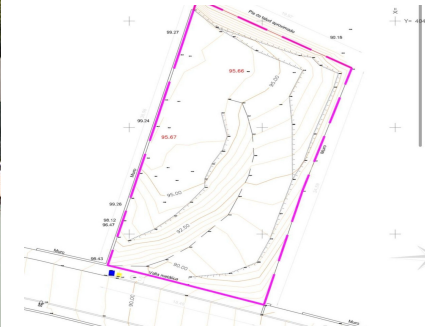
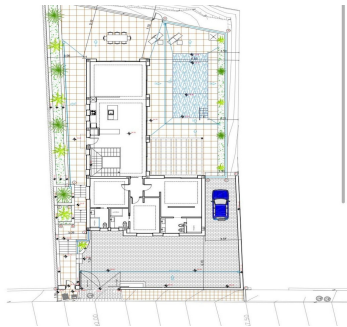
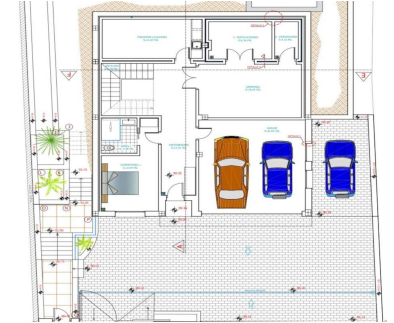


Sales - Plot - Mijas  
390.000€

[www.arbatstates.com](http://www.arbatstates.com)  
+34 606 84 36 45  
+34 602 51 80 97  
[info@arbatstates.com](mailto:info@arbatstates.com)



Ref.-ID: R5365036

Mijas

Plot



706 m2

WITH LICENSE !! Plot for sale with licence for ready to build Villa Exclusive plot located in Cerro del Águila, one of the most pleasant residential areas of Mijas. The plot already has a fully approved and paid building license, allowing construction to start immediately without administrative delays. The planned project features an exceptional villa, designed to take full advantage of the stunning open views towards La Cala de Mijas, the Mediterranean Sea, and the surrounding mountains. Its elevated position and orientation offer breathtaking panoramic scenery. The urbanization is peaceful, well-maintained, and highly desirable, with a pleasant residential atmosphere and friendly neighbours. It is also very close to several golf courses, amenities, restaurants, and just minutes from the beach. A perfect opportunity to build your dream home in a prime location on the Costa del Sol, combining nature, sea views, and excellent accessibility. Full licence Technical details License with project ready to build • Plot size: 690.00 m<sup>2</sup> (according to Title Deed / Nota Simple) 706.00 m<sup>2</sup> (according to Cadastre) • Planning regulations • Typology: Detached single-family house • Subtype: AIS-3 • Urban parameters (AIS-3): • Net buildability: 0.35 m<sup>2</sup>/m<sup>2</sup>s → 241.50 m<sup>2</sup> buildable area • Maximum plot occupancy: 35% → 241.50 m<sup>2</sup> • Boundary setbacks: 3.00 m • Minimum plot size: 500 m<sup>2</sup> • Maximum height: Ground floor + 1 (7.00 m) Residential Plot, Mijas, Costa del Sol. Garden/Plot 706 m<sup>2</sup>. Setting : Close To Shops, Close To Schools, Urbanisation. Views : Sea, Mountain, Golf, Beach, Country. Utilities : Electricity, Drinkable Water. Category : Bargain, Beachfront, Cheap, Golf, Holiday Homes, Investment, Luxury, Off Plan, With Planning Permission.

**Setting**

- ✓ Close To Shops
- ✓ Close To Schools
- ✓ Urbanisation

**Views**

- ✓ Sea
- ✓ Mountain
- ✓ Golf
- ✓ Beach
- ✓ Country

**Utilities**

- ✓ Electricity
- ✓ Drinkable Water

**Category**

- ✓ Bargain
- ✓ Beachfront
- ✓ Cheap
- ✓ Golf
- ✓ Holiday Homes
- ✓ Investment
- ✓ Luxury
- ✓ Off Plan
- ✓ With Planning Permission