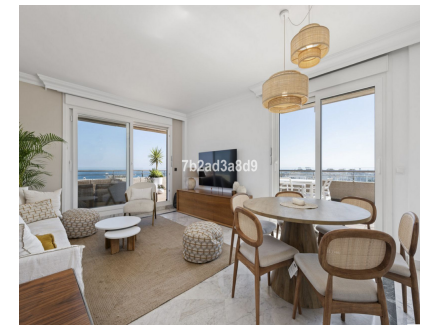


Sales - Apartment - Puerto Banús
2.300.000€

www.arbatstates.com
+34 606 84 36 45
+34 602 51 80 97
info@arbatstates.com



Ref.-ID: R5339212

Puerto Banús

Apartment

Community: 3,000 EUR / year

IBI: 3,000 EUR / year



3



2



100 m2

Discover a Truly One-of-a-Kind Penthouse! Only 8 units of this model exist across all four buildings—making this an exceptionally rare opportunity to enter the market. Nestled in the renowned Puerto Banús port, this exquisite penthouse boasts breath-taking panoramic views of the Mediterranean Sea and the harbour from a 196 m² wraparound terrace, complemented by 100 m² of luxurious interior living space. Experience the pinnacle of coastal luxury living in Puerto Banús, ideally located directly opposite the famous El Corte Inglés, with a wealth of high-end boutiques, avant-garde restaurants, and premium leisure activities—all under Marbella’s glorious climate. Recently renovated with meticulous attention to detail and adorned with elegant contemporary design, every corner of the home has been optimized to highlight its spectacular views of the sea and the majestic surrounding mountains.

Setting

- ✓ Commercial Area
- ✓ Beachside
- ✓ Port
- ✓ Close To Port
- ✓ Close To Shops
- ✓ Close To Sea
- ✓ Close To Town
- ✓ Close To Schools
- ✓ Close To Marina

Features

- ✓ Lift
- ✓ Fitted Wardrobes
- ✓ Near Transport
- ✓ Private Terrace
- ✓ Paddle Tennis
- ✓ Tennis Court
- ✓ Ensuite Bathroom
- ✓ Marble Flooring
- ✓ Jacuzzi
- ✓ Double Glazing
- ✓ Restaurant On Site

Orientation

- ✓ East
- ✓ South East
- ✓ South
- ✓ South West
- ✓ West

Furniture

- ✓ Fully Furnished

Condition

- ✓ Excellent

Kitchen

- ✓ Fully Fitted
- ✓ Kitchen-Lounge

Pool

- ✓ Communal

Parking

- ✓ Underground

Climate Control

- ✓ Air Conditioning
- ✓ Hot A/C
- ✓ Cold A/C

Utilities

- ✓ Electricity
- ✓ Drinkable Water

Views

- ✓ Sea
- ✓ Mountain
- ✓ Beach
- ✓ Panoramic
- ✓ Pool

Category

- ✓ Resale