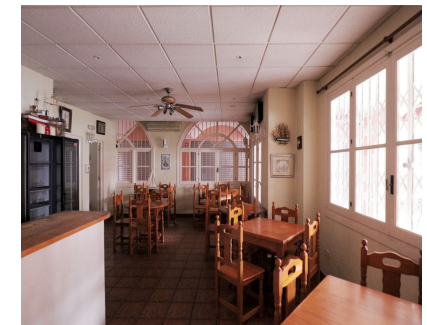


Sales - Commercial - Calahonda
199.995€

www.arbatstates.com
 +34 606 84 36 45
 +34 602 51 80 97
info@arbatstates.com



Ref.-ID: R5320912

Calahonda

Commercial

Community: 4,164 EUR / year

IBI: 696 EUR / year



2



79 m2

INVESTMENT OPPORTUNITY: Commercial Space for Sale A fantastic opportunity to invest in the very popular commercial centre and landmark of El Zoco, Calahonda. El Zoco is the largest and most popular commercial centre in Calahonda, right next to the main A7 road. The shopping centre offers a post office, supermarket, shops, bars, restaurants and a multitude of other services from independent traders, with plenty of parking space, disabled access and a lift. Set in a prime location, on street level and very close to an abundance of car parking, these commercial units are for sale after 25 years of ownership. Ripe for renovation, and priced accordingly, the 3 commercial units were developed into one, which previously operated as a fish and chip shop restaurant and takeaway. The units could be renovated as one, or easily be split into three independent units and converted into modern shops, offices, etc., for rental or onward sale. This is a rare opportunity for investment not to be missed: viewings are highly recommended.

- | | | | | | |
|--|---|--|--|---|---|
| Setting <ul style="list-style-type: none">✓ Commercial Area✓ Close To Shops✓ Close To Sea | Orientation <ul style="list-style-type: none">✓ West | Condition <ul style="list-style-type: none">✓ Renovation Required | Views <ul style="list-style-type: none">✓ Street | Features <ul style="list-style-type: none">✓ Restaurant On Site | Furniture <ul style="list-style-type: none">✓ Part Furnished |
| Kitchen <ul style="list-style-type: none">✓ Partially Fitted | Garden <ul style="list-style-type: none">✓ Communal | Parking <ul style="list-style-type: none">✓ Street | Utilities <ul style="list-style-type: none">✓ Electricity✓ Drinkable Water | Category <ul style="list-style-type: none">✓ Cheap✓ Investment✓ Resale | |