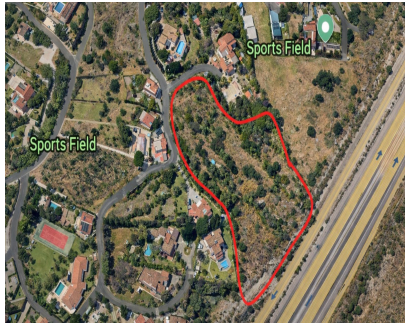




Sales - Plot - Mijas  
**2.495.000€**

[www.arbatstates.com](http://www.arbatstates.com)  
**+34 606 84 36 45**  
**+34 602 51 80 97**  
[info@arbatstates.com](mailto:info@arbatstates.com)



Ref.-ID: R5300431

Mijas

Plot



**6236 m2**

Prime Urban Plot for Sale – Lew Hoad Area, Las Lomas de Mijas – Sea & Mountain Views A rare opportunity to acquire a 6,236 m<sup>2</sup> urban plot in the highly desirable Lew Hoad area of Las Lomas de Mijas, one of the Costa del Sol’s most established and sought-after residential neighbourhoods. The plot enjoys an elevated position with open mountain views and partial sea views, located in a peaceful residential environment known for its quality villas and strong international demand. This is a plot sale, offering the buyer the opportunity to design and build a project within the planning parameters of the area. Location The Lew Hoad area, centred around the well-known Lew Hoad Tennis & Padel Club, is a popular residential zone offering privacy, tranquility and excellent access to the surrounding towns and coastline. Las Lomas de Mijas provides easy access to: • Mijas Pueblo • La Cala de Mijas • Fuengirola • Beaches and golf courses • International schools Málaga Airport: approximately 30–35 minutes by car The area is popular with international buyers looking for quality villas in peaceful residential surroundings close to the coast, helping maintain strong property values. Planning & Zoning • Land classification: Urban land (Suelo Urbano) • Zoning: AIS-4 • Permitted use: Residential – detached villas Planning parameters include: • Minimum plot size: 800 m<sup>2</sup> • Buildability: 0.25 m<sup>2</sup>/m<sup>2</sup> • Maximum occupation: 25% • Maximum height: PB + 1 (7 m) • Setbacks: 3 m • Parking: 2 spaces per dwelling Development Potential Based on current planning parameters, the plot could potentially accommodate: Up to 7 independent villas Approximate buildable roof area: 1,559 m<sup>2</sup> Basements and additional non-computable areas may be incorporated depending on project design. The elevated nature of the land allows future homes to benefit from open views and partial sea views, which enhances both resale value and end-user appeal. Opportunity This plot represents an excellent opportunity for: • Developers • Investors • Buyers wishing to build a dream villa in a prime residential location Viewings Viewings can be arranged by appointment. Please contact us to organise a site visit and explore the potential of this exceptional plot.

**Setting**

- ✓ Suburban
- ✓ Country
- ✓ Mountain Pueblo
- ✓ Close To Shops
- ✓ Close To Schools

**Orientation**

- ✓ South

**Condition**

- ✓ Excellent

**Views**

- ✓ Sea
- ✓ Mountain
- ✓ Country
- ✓ Panoramic