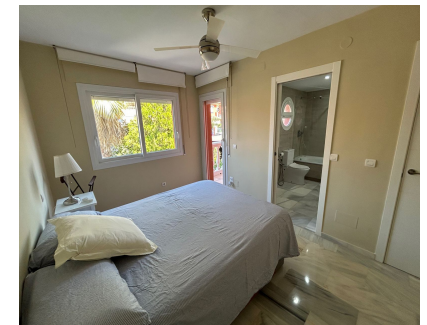


Sales - House - Atalaya
650.000€

www.arbatstates.com
+34 606 84 36 45
+34 602 51 80 97
info@arbatstates.com



Ref.-ID: R5254969

Atalaya

House



4



3



204 m2

Corner Townhouse with Large Private Garden in Lomas de Monte Biarritz Corner townhouse offering maximum privacy, located in the sought-after Lomas de Monte Biarritz urbanisation, between Marbella and Estepona, just 2 km from the beach and San Pedro de Alcántara. Private residential complex with communal swimming pool and gardens. The property is set apart from the main residential area, providing an extra level of privacy and tranquillity. It sits on a 577 m² plot and features a spacious 367 m² private garden with lawn and fruit trees, ideal for outdoor living. Distributed over three levels, the property offers 203.78 m² built. The main floor features a bright living room with direct access to the porch and garden, which can be enclosed with glass curtains, a recently extended and renovated kitchen with high-end appliances, and a guest toilet with storage space. The upper floor comprises three bedrooms and two bathrooms. The top floor offers a fourth attic-style bedroom, additional storage and a large solarium with open views over green areas. Additional features include Kommerling windows providing excellent thermal and acoustic insulation, and a photovoltaic solar system with warranty valid until 2029, ensuring energy efficiency and savings. An ideal property as a permanent residence or holiday home in one of the most desirable areas of the Costa del Sol.

Setting

- ✓ Close To Golf
- ✓ Close To Shops
- ✓ Close To Town
- ✓ Close To Schools
- ✓ Urbanisation

Garden

- ✓ Communal

Condition

- ✓ Recently Renovated

Security

- ✓ Gated Complex
- ✓ Entry Phone

Pool

- ✓ Communal
- ✓ Private
- ✓ Children`s Pool

Parking

- ✓ Communal
- ✓ Private

Climate Control

- ✓ Air Conditioning

Utilities

- ✓ Electricity

Features

- ✓ Fitted Wardrobes
- ✓ Private Terrace
- ✓ Satellite TV
- ✓ WiFi
- ✓ Ensuite Bathroom

Kitchen

- ✓ Fully Fitted