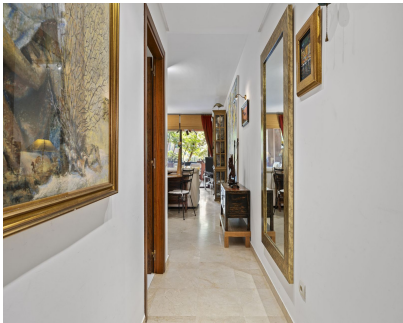


Sales - Apartment - El Rosario
750.000€

www.arbatestates.com
+34 606 84 36 45
+34 602 51 80 97
info@arbatestates.com



Ref.-ID: R5253991

El Rosario

Apartment

IBI: 1,207 EUR / year

Rubbish: 185 EUR / year



3



2



160 m2

Exclusive Beachfront Apartment in Alicante Playa A rare opportunity to acquire a frontline beach apartment; properties of this kind seldom come to market and, when they do, they sell quickly. This is a thoughtfully home, with a well-balanced layout and generous terraces that are truly meant to be enjoyed, all in a location that makes a real difference. Set within the gated community of Alicante Playa, Phase IV, one of the most established and highly regarded phases of the development, the apartment sits directly on one of Marbella’s finest sandy beaches, with direct access to the promenade and the sea. The community is renowned for its beautifully maintained, mature gardens, cared for year-round, offering privacy and a peaceful, relaxed atmosphere. The property offers 159 m² built (136 m² usable) and is distributed into a spacious and light-filled living room, a separate fully fitted kitchen, three bedrooms and two bathrooms. Two well-proportioned terraces invite you to enjoy the Mediterranean climate and views over the landscaped gardens, seamlessly extending the indoor living space outdoors. Alicante Playa features a communal swimming pool, paddle and tennis courts, a children’s play area and extensive green spaces. The development benefits from 24-hour security, concierge service and CCTV surveillance. The location is particularly convenient, with close proximity to renowned restaurants, international schools and supermarkets, and easy access to La Cañada shopping centre and Marbella town centre. The price includes a private storage room and an underground parking space. Furniture is not included. A beachfront home that combines an exceptional location, ideal as a primary residence, holiday home or investment opportunity. Call us to request a visit, we will be delighted to take you on a viewing.

Setting <ul style="list-style-type: none">✓ Beachfront✓ Beachside✓ Close To Shops✓ Close To Sea✓ Close To Schools✓ Urbanisation✓ Front Line Beach Complex	Orientation <ul style="list-style-type: none">✓ South East	Condition <ul style="list-style-type: none">✓ Excellent	Pool <ul style="list-style-type: none">✓ Communal	Climate Control <ul style="list-style-type: none">✓ Air Conditioning✓ Hot A/C	Views <ul style="list-style-type: none">✓ Garden✓ Pool
Features <ul style="list-style-type: none">✓ Lift✓ Fitted Wardrobes✓ Near Transport✓ Private Terrace✓ WiFi✓ Tennis Court✓ Storage Room	Furniture <ul style="list-style-type: none">✓ Not Furnished	Kitchen <ul style="list-style-type: none">✓ Fully Fitted	Garden <ul style="list-style-type: none">✓ Communal	Security <ul style="list-style-type: none">✓ Gated Complex	Parking <ul style="list-style-type: none">✓ Underground✓ Communal
Utilities <ul style="list-style-type: none">✓ Electricity✓ Drinkable Water	Category <ul style="list-style-type: none">✓ Beachfront				