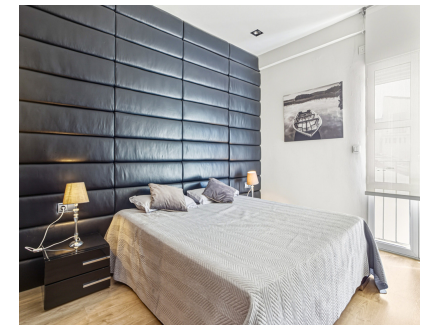


Sales - Apartment - Puerto Banús
699.000€

www.arbatestates.com
+34 606 84 36 45
+34 602 51 80 97
info@arbatestates.com



Ref.-ID: R5214592

Puerto Banús

Apartment

Community: 660 EUR / year

IBI: 981 EUR / year

Rubbish: 93 EUR / year



1



1



91 m2

Beautiful beachfront penthouse with sea and La Concha mountain views, located in a gated community in the heart of Puerto Banús. Just a few steps from the beach, restaurants, shops, and all amenities. This bright and welcoming property offers an unbeatable location and the perfect combination of comfort and lifestyle. The penthouse features one bedroom and one fully equipped bathroom, as well as a modern kitchen and a spacious living-dining area with a fireplace, filled with natural light. The interior has been designed for both functionality and comfort, and includes centralized air conditioning, shutters, and a pleasant, airy atmosphere. The gated community provides a secure and peaceful environment, ideal for both permanent residence and holiday stays. Additionally, the property offers the possibility of short-term rentals, making it an attractive investment opportunity. An exceptional opportunity to acquire a penthouse in one of Marbella's most exclusive areas, combining stunning sea and mountain views with a truly privileged location.

Setting

- ✓ Beachfront
- ✓ Beachside
- ✓ Close To Port
- ✓ Close To Shops
- ✓ Close To Sea
- ✓ Close To Town
- ✓ Close To Schools

Furniture

- ✓ Fully Furnished

Orientation

- ✓ East

Security

- ✓ Gated Complex

Condition

- ✓ Good

Category

- ✓ Beachfront

Climate Control

- ✓ Air Conditioning
- ✓ Fireplace

Views

- ✓ Sea
- ✓ Mountain

Features

- ✓ Fitted Wardrobes
- ✓ Near Transport
- ✓ Private Terrace
- ✓ Ensuite Bathroom
- ✓ Marble Flooring