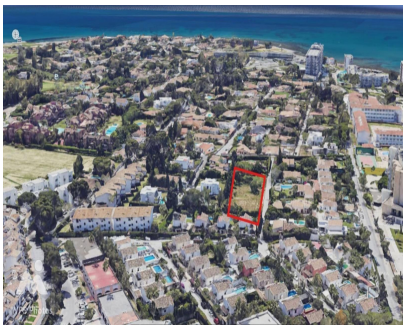
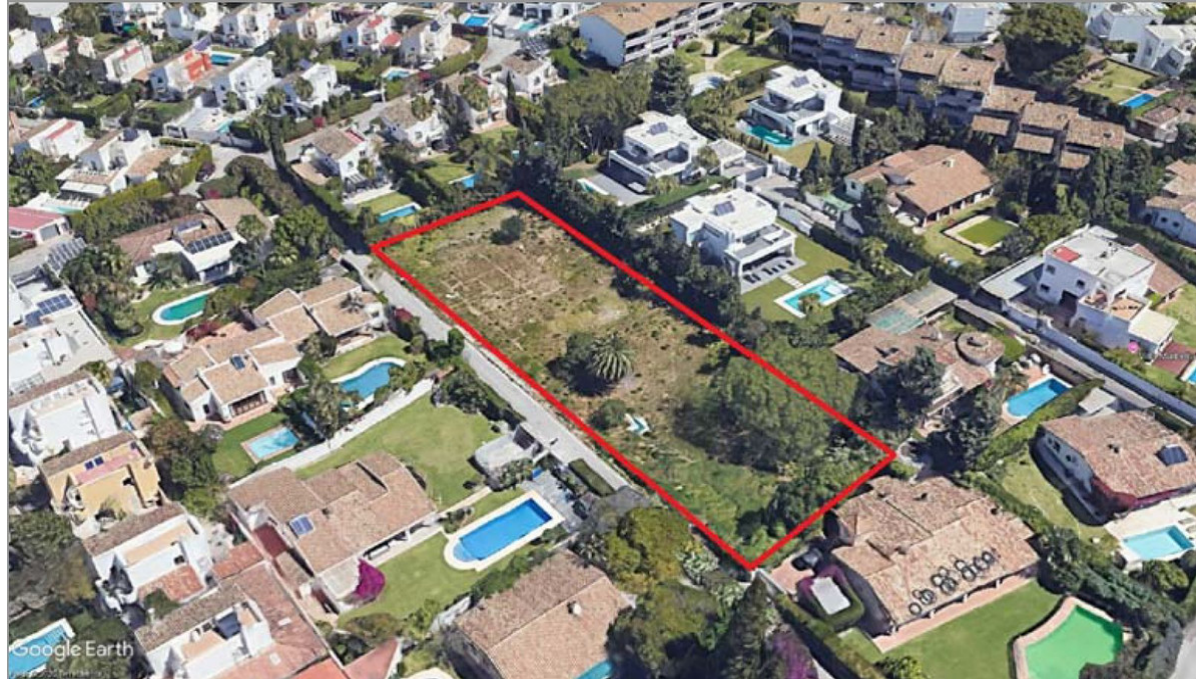


Sales - Plot - Atalaya  
**2.950.000€**

[www.arbatstates.com](http://www.arbatstates.com)  
 +34 606 84 36 45  
 +34 602 51 80 97  
[info@arbatstates.com](mailto:info@arbatstates.com)



Ref.-ID: R5120911

Atalaya

Plot



**2595 m2**

Exclusive Beachside Plots - Costa del Sol An exceptional opportunity to acquire three prime plots of 865 m<sup>2</sup> each (total 2,595 m<sup>2</sup>), available individually or as a combined estate. Ideally suited for the creation of three luxury villas or one expansive private residence, these plots are positioned in one of the most sought-after beachside enclaves on the Costa del Sol. The land is perfectly flat and beautifully green, offering effortless building potential with full planning permissions already in place. Located just a short stroll from the golden sands, these plots also enjoy walking-distance access to a supermarket, pharmacy, and a selection of quality restaurants. The area is peaceful and exclusive, yet benefits from excellent road connections, placing Puerto Banús, Marbella, and Estepona just minutes away. This is more than just land; it is the foundation for a lifestyle defined by elegance, convenience, and coastal beauty. Whether envisioned as three distinctive villas or one magnificent estate, this property offers a rare chance to secure your place in one of Europe's most desirable destinations.

**Setting**

- ✓ Town
- ✓ Commercial Area
- ✓ Beachside
- ✓ Close To Golf
- ✓ Close To Port
- ✓ Close To Shops
- ✓ Close To Sea
- ✓ Close To Town
- ✓ Close To Schools
- ✓ Close To Marina
- ✓ Urbanisation

**Parking**

- ✓ Street
- ✓ More Than One
- ✓ Private

**Orientation**

- ✓ South East
- ✓ South
- ✓ South West

**Utilities**

- ✓ Electricity
- ✓ Drinkable Water

**Pool**

- ✓ Room For Pool

**Category**

- ✓ Beachfront
- ✓ Investment
- ✓ With Planning Permission
- ✓ Contemporary

**Views**

- ✓ Sea
- ✓ Mountain
- ✓ Garden
- ✓ Urban
- ✓ Street

**Features**

- ✓ Near Transport
- ✓ Near Mosque
- ✓ Near Church

**Garden**

- ✓ Private