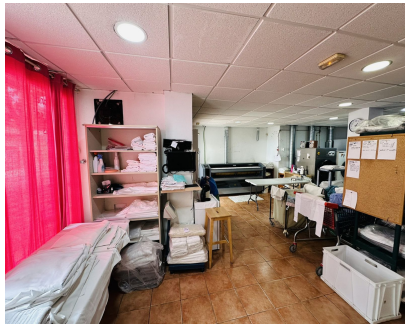


Sales - Commercial - Benalmadena Pueblo
210.000€

www.arbatstates.com
+34 606 84 36 45
+34 602 51 80 97
info@arbatstates.com



Ref.-ID: R5056519

Benalmadena Pueblo

Commercial



2



92 m2

Transfer of a fully equipped, working laundromat located in the center of Benalmádena Pueblo! ☐ We are offering the transfer of a fully equipped laundromat with an excellent reputation, operating for 20 years, and ready to continue generating income from day one. Our business offers professional service to hotels, restaurants, medical centers, and companies that manage rentals for platforms such as Booking and Airbnb. We offer delivery and collection services from La Cala de Mijas to Torremolinos and have a highly qualified team of professionals. The current British owners have optimized this business over the last three years and have a software program specifically designed to maximize the business's performance, capable of handling more than 150 clients. They have a business growth plan that they would make available to the new owner. They are transferring the business due to relocation to another area in Spain. What does the transfer include? - Commercial premises in a strategic area with a good flow of customers. - New and functional technological equipment: - Computer with monitor and keyboard - Epson receipt printer - Canon printer - Cash register - Shelving - Van - Ironing center - Domestic washing machine - Ironing machine - 24 kg washing machine - 18 kg washing machine - 18 kg washing machine - Dryer 1 - Dryer 2 - Dryer 3 It has two bathrooms, a storage area, and air conditioning (hot and cold). All equipment is less than 12 months old and is delivered in perfect condition and with a warranty. Up-to-date documentation - Permits, licenses, and contracts ready for change of ownership. - Initial support is provided if required. An ideal opportunity for those seeking a secure and profitable investment. Rent: ☐1,570/month and a two-month deposit. Contact us without obligation for more details or to schedule a visit to the premises.

- | | | | | | | |
|--|--|--|---|--|---|--|
| <p>Setting</p> <ul style="list-style-type: none"> ✓ Village ✓ Close To Shops ✓ Close To Town ✓ Close To Schools | <p>Orientation</p> <ul style="list-style-type: none"> ✓ South East | <p>Condition</p> <ul style="list-style-type: none"> ✓ Good | <p>Climate Control</p> <ul style="list-style-type: none"> ✓ Air Conditioning ✓ Hot A/C ✓ Cold A/C | <p>Views</p> <ul style="list-style-type: none"> ✓ Street | <p>Features</p> <ul style="list-style-type: none"> ✓ Near Transport ✓ Storage Room ✓ Utility Room | |
| <p>Furniture</p> <ul style="list-style-type: none"> ✓ Fully Furnished | <p>Utilities</p> <ul style="list-style-type: none"> ✓ Electricity | <p>Category</p> <ul style="list-style-type: none"> ✓ Bargain | | | | |