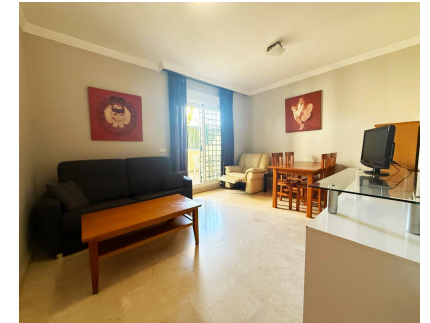


**Sales - Apartment - Benalmadena**  
**265.000€**

**www.arbatestates.com**  
**+34 606 84 36 45**  
**+34 602 51 80 97**  
**info@arbatestates.com**



**Ref.-ID: R5020543**

**Benalmadena**

**Apartment**

**Community: 900 EUR / year**

**IBI: 360 EUR / year**

**Rubbish: 125 EUR / year**



**1**



**1**



**60 m2**

Discover this charming flat located in one of the most exclusive areas of Benalmadena with stunning views from the terrace to the golf course!!! Flat with one bedroom, one bathroom, independent kitchen, living room with access to the terrace, perfect to enjoy the nice weather and the views. The urbanization has all kinds of amenities, two large parking spaces, communal swimming pool, restaurant, social club, and concierge for added security. It has all services within walking distance, supermarkets, pharmacy, restaurants, schools, shops. All in a quiet and well kept environment Ideal as an investment, permanent residence, second home or holiday home. Living here is a pleasure for the senses... beach, golf, tranquillity, security... unique surroundings.

<b>Setting</b> <ul style="list-style-type: none"> <li>✓ Frontline Golf</li> <li>✓ Town</li> <li>✓ Commercial Area</li> <li>✓ Close To Golf</li> <li>✓ Close To Port</li> <li>✓ Close To Shops</li> <li>✓ Close To Sea</li> <li>✓ Close To Town</li> <li>✓ Close To Schools</li> <li>✓ Close To Forest</li> <li>✓ Marina</li> <li>✓ Close To Marina</li> <li>✓ Urbanisation</li> </ul>	<b>Orientation</b> <ul style="list-style-type: none"> <li>✓ South</li> </ul>	<b>Condition</b> <ul style="list-style-type: none"> <li>✓ Good</li> </ul>	<b>Pool</b> <ul style="list-style-type: none"> <li>✓ Communal</li> </ul>	<b>Climate Control</b> <ul style="list-style-type: none"> <li>✓ Air Conditioning</li> <li>✓ Cold A/C</li> </ul>	<b>Views</b> <ul style="list-style-type: none"> <li>✓ Golf</li> </ul>
<b>Features</b> <ul style="list-style-type: none"> <li>✓ Lift</li> <li>✓ Fitted Wardrobes</li> <li>✓ Near Transport</li> <li>✓ Private Terrace</li> <li>✓ Satellite TV</li> <li>✓ WiFi</li> <li>✓ Gym</li> <li>✓ Paddle Tennis</li> <li>✓ Storage Room</li> <li>✓ Utility Room</li> <li>✓ Access for people with reduced mobility</li> <li>✓ Marble Flooring</li> <li>✓ Bar</li> <li>✓ Barbeque</li> <li>✓ Double Glazing</li> <li>✓ 24 Hour Reception</li> <li>✓ Restaurant On Site</li> <li>✓ Courtesy Bus</li> <li>✓ Near Mosque</li> <li>✓ Near Church</li> <li>✓ Fiber Optic</li> </ul>	<b>Furniture</b> <ul style="list-style-type: none"> <li>✓ Optional</li> </ul>	<b>Kitchen</b> <ul style="list-style-type: none"> <li>✓ Fully Fitted</li> </ul>	<b>Garden</b> <ul style="list-style-type: none"> <li>✓ Communal</li> </ul>	<b>Security</b> <ul style="list-style-type: none"> <li>✓ Gated Complex</li> <li>✓ Entry Phone</li> <li>✓ Alarm System</li> <li>✓ 24 Hour Security</li> </ul>	<b>Parking</b> <ul style="list-style-type: none"> <li>✓ Garage</li> <li>✓ More Than One</li> </ul>
<b>Utilities</b> <ul style="list-style-type: none"> <li>✓ Electricity</li> <li>✓ Drinkable Water</li> <li>✓ Telephone</li> <li>✓ Gas</li> </ul>	<b>Category</b> <ul style="list-style-type: none"> <li>✓ Bargain</li> <li>✓ Cheap</li> <li>✓ Distressed</li> <li>✓ Golf</li> <li>✓ Holiday Homes</li> <li>✓ Investment</li> <li>✓ Luxury</li> <li>✓ Reduced</li> <li>✓ Resale</li> </ul>				