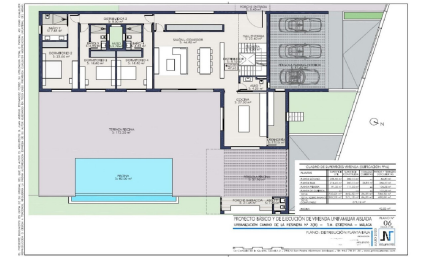


**Sales - Plot - Estepona**  
**549.000€**

**www.arbatestates.com**  
**+34 606 84 36 45**  
**+34 602 51 80 97**  
**info@arbatestates.com**



**Ref.-ID: R5014036**

**Estepona**

**Plot**

**IBI: 630 EUR / year**

**Rubbish: 170 EUR / year**



**640 m2**



**1237 m2**

License & project approved Prime Plot with Sea Views in La Resina Golf, Estepona An exceptional opportunity to build a stunning modern villa on a completely flat 1,237 m² plot overlooking La Resina Golf Course. Recently approved and paid building license included, with a luxury project designed by one of Spain’s top architects. The property will feature sea views from the first floor, an infinity pool , and parking for several cars. With a projected value of approx. €2.8M, this is a perfect investment with an estimated ROI of €800,000. The stone retaining wall adds character and privacy. All guarantees are in place—construction can begin almost immediately. Build your dream home or develop to resell. La Resina Golf & Country Club in Estepona, Málaga, is a boutique 9-hole course known for its lush landscaping, immaculate greens, and relaxed atmosphere. Nestled in the New Golden Mile, it offers scenic views of the Mediterranean and nearby mountains. Ideal for players of all levels, the course combines challenge and beauty, with water features and well-kept fairways. The club also features a welcoming clubhouse and practice facilities, making it a favorite for locals and visitors seeking a quality, casual golfing experience on the Costa del Sol. Super location 10 minutes to Estepona town and 14 minutes to Puerto Banus, with Atlas American College walking distance away. Beach a 5 minute drive away. Cafe, Padel and restaurants all walking distance with the golf club house at the end of the road. Surrounded by luxury villas with selling prices over 2.5million euros. Super opportunity and potential to create a family home of your dreams. Also would make an amazing investment for a developer.

<b>Setting</b> <ul style="list-style-type: none"><li>✔ Close To Sea</li><li>✔ Close To Town</li></ul>	<b>Orientation</b> <ul style="list-style-type: none"><li>✔ South</li><li>✔ South West</li></ul>	<b>Condition</b> <ul style="list-style-type: none"><li>✔ Excellent</li></ul>	<b>Pool</b> <ul style="list-style-type: none"><li>✔ Private</li></ul>	<b>Climate Control</b> <ul style="list-style-type: none"><li>✔ Air Conditioning</li><li>✔ Hot A/C</li><li>✔ Cold A/C</li></ul>	<b>Views</b> <ul style="list-style-type: none"><li>✔ Sea</li><li>✔ Mountain</li><li>✔ Panoramic</li><li>✔ Garden</li><li>✔ Pool</li></ul>
<b>Parking</b> <ul style="list-style-type: none"><li>✔ Underground</li><li>✔ Garage</li><li>✔ Private</li></ul>	<b>Utilities</b> <ul style="list-style-type: none"><li>✔ Electricity</li><li>✔ Drinkable Water</li></ul>	<b>Category</b> <ul style="list-style-type: none"><li>✔ Resale</li></ul>			