

Sales - Plot - Marbella
1.200.000€

www.arbatestates.com
+34 606 84 36 45
+34 602 51 80 97
info@arbatestates.com

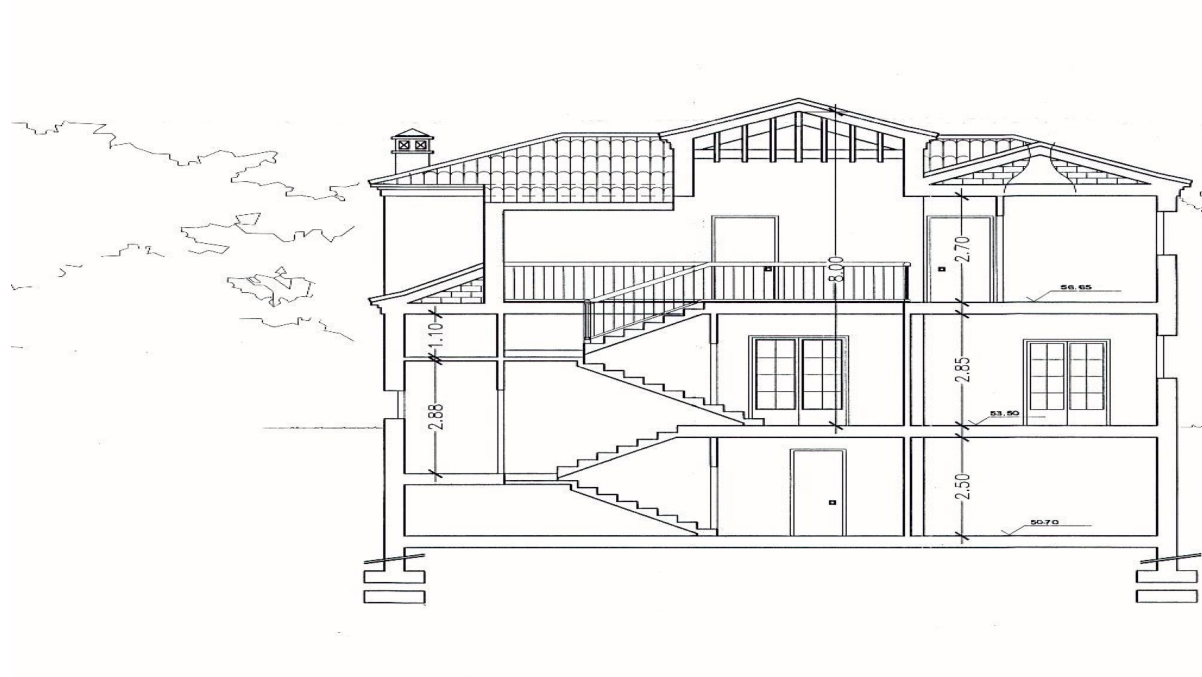


Ref.-ID: R4936540

Marbella



1600 m2



Plot

OPPORTUNITY FOR INVESTORS. 2 INDEPENDENT PLOTS FOR SALE FOR SALE WITH READY MADE PROJECT AND OBTAINED LICENCES. CAN START THE CONSTRUCTION ALREADY TOMORROW! Your dream house in Marbella can be already finished in one year! Contact us for more information Nestled in the prestigious area of Valdeolletas, Marbella, this expansive plot offers a rare opportunity to create a bespoke property in one of the most sought-after locations in Malaga. Spanning an impressive 1,600m², the plot is perfectly positioned to take advantage of the region's natural beauty and convenient amenities, making it an ideal choice for those seeking a harmonious blend of tranquillity and accessibility. The plot boasts breathtaking panoramic views, encompassing the majestic mountains and lush gardens that surround the area. Its elevated position ensures uninterrupted vistas, providing a serene backdrop for any future development. Whether envisioning a luxurious villa or a contemporary retreat, the plot's generous dimensions and prime location offer endless possibilities for architectural creativity. Proximity to essential amenities further enhances the appeal of this property. Situated near transport links, schools, and a variety of recreational facilities, the plot ensures convenience for families and professionals alike. Additionally, its closeness to the town centre, pristine beaches, and renowned golf courses makes it a desirable investment for those looking to enjoy the best of Marbella's lifestyle. Adding to its charm, the plot is located near children's playgrounds, making it a family-friendly option. The surrounding area is characterised by its peaceful ambiance, yet it remains within easy reach of vibrant urban attractions. This unique combination of features makes the Valdeolletas plot a truly exceptional opportunity for discerning buyers.

Setting

- ✔ Close To Golf
- ✔ Close To Sea
- ✔ Close To Town
- ✔ Close To Schools

Views

- ✔ Mountain
- ✔ Panoramic
- ✔ Garden

Features

- ✔ Near Transport