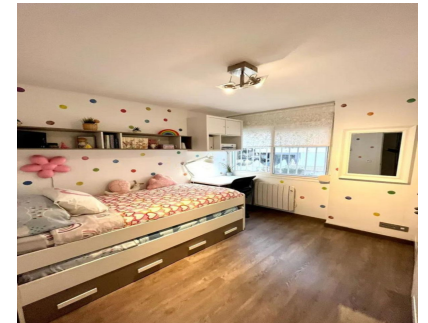


Sales - Apartment - Marbella
415.000€

www.arbatestates.com
+34 606 84 36 45
+34 602 51 80 97
info@arbatestates.com



Ref.-ID: R4870342

Marbella

Apartment

Community: 792 EUR / year

IBI: 663 EUR / year

Rubbish: 43 EUR / year



3



2



90 m2

Middle Floor Apartment, Marbella, Costa del Sol. 3 Bedrooms, 2 Bathrooms, Built 90 m², Terrace 5 m². Setting : Town, Suburban, Commercial Area, Beachside, Close To Port, Close To Shops, Close To Schools, Close To Marina. Orientation : East. Condition : Good. Climate Control : Air Conditioning, Hot A/C, Cold A/C. Views : Urban. Features : Covered Terrace, Lift, Fitted Wardrobes, Near Transport, Private Terrace, WiFi, Utility Room, Ensuite Bathroom, Access for people with reduced mobility, Double Glazing, Courtesy Bus, Near Church, Fiber Optic. Furniture : Part Furnished. Kitchen : Fully Fitted. Security : Gated Complex, Entry Phone, Alarm System. Parking : Street. Category : Resale.

Setting <div><div></div> Town</div> <div><div></div> Suburban</div> <div><div></div> Commercial Area</div> <div><div></div> Beachside</div> <div><div></div> Close To Port</div> <div><div></div> Close To Shops</div> <div><div></div> Close To Schools</div> <div><div></div> Close To Marina</div>	Orientation <div><div></div> East</div>	Condition <div><div></div> Good</div>	Climate Control <div><div></div> Air Conditioning</div> <div><div></div> Hot A/C</div> <div><div></div> Cold A/C</div>	Views <div><div></div> Urban</div>	Features <div><div></div> Covered Terrace</div> <div><div></div> Lift</div> <div><div></div> Fitted Wardrobes</div> <div><div></div> Near Transport</div> <div><div></div> Private Terrace</div> <div><div></div> WiFi</div> <div><div></div> Utility Room</div> <div><div></div> Ensuite Bathroom</div> <div><div></div> Access for people with reduced mobility</div> <div><div></div> Double Glazing</div> <div><div></div> Courtesy Bus</div> <div><div></div> Near Church</div> <div><div></div> Fiber Optic</div>
Furniture <div><div></div> Part Furnished</div>	Kitchen <div><div></div> Fully Fitted</div>	Security <div><div></div> Gated Complex</div> <div><div></div> Entry Phone</div> <div><div></div> Alarm System</div>	Parking <div><div></div> Street</div>	Category <div><div></div> Resale</div>	