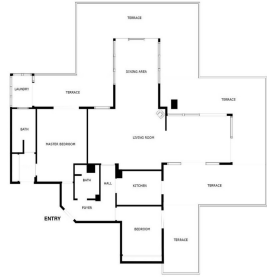


Sales - Apartment - Benalmadena Costa
610.000€

www.arbatestates.com
+34 606 84 36 45
+34 602 51 80 97
info@arbatestates.com



Ref.-ID: R4777045

Benalmadena Costa

Apartment

Community: 3,576 EUR / year IBI: 672 EUR / year

Rubbish: 83 EUR / year



2



2



135 m2



272 m2

Welcome to your dream home in the prestigious area of Higueron! This exquisite 2-bedroom penthouse offers unparalleled luxury and comfort with breathtaking sea views and a host of modern amenities. The Reserva del Higuerón Housing Estate is an idyllic place offering the best views, an architectural style that adapts to the land’s natural features and a wide variety of services. The entire area is granted safety, exclusiveness and wellbeing, as well as the satisfaction of the highest demands with every development. Key Features: Prime Location: Situated in the sought after area of Higueron, you are conveniently close to high-end restaurants, well equipped fitness center, tennis court and top-rated schools and the Higueron 5 stars hotel Enjoy unparalleled privacy in the community's highest penthouse, offering complete peace with no neighbouring units overlooking your space. Panoramic Sea Views: Revel in the serene and picturesque sea views right from your home, providing a constant reminder of the beauty that surrounds you. Tropical Gardens: The complex features beautifully landscaped tropical gardens and 2 pools, offering a peaceful and lush environment to unwind and enjoy nature. Modern Amenities: Benefit from the exclusive amenities within the complex, including 2 swimming pools, spa, tennis courts, and a well-equipped fitness center. Additional Features: Fireplace Two spacious bedrooms with direct access to the terrace EASY Possibility of converting it into a 3 bedroom 5 electric awnings Higuerón bus that takes you to the beach in Carvajal and shopping area including restaurants, pharmacy and Carrefour supermarket Laundry room Secure underground parking and storage room. Only 20 minutes away from the airport! 135m2 Built + 138m2 Terrace

Setting <ul style="list-style-type: none">✓ Beachside✓ Close To Golf✓ Close To Port✓ Close To Sea✓ Close To Town✓ Close To Schools✓ Urbanisation	Orientation <ul style="list-style-type: none">✓ East✓ South✓ West	Condition <ul style="list-style-type: none">✓ Good	Pool <ul style="list-style-type: none">✓ Communal✓ Children`s Pool	Climate Control <ul style="list-style-type: none">✓ Air Conditioning✓ Hot A/C✓ Cold A/C✓ Fireplace✓ U/F/H Bathrooms	Views <ul style="list-style-type: none">✓ Sea✓ Mountain✓ Panoramic✓ Garden
Features <ul style="list-style-type: none">✓ Lift✓ Fitted Wardrobes✓ Near Transport✓ Private Terrace✓ Satellite TV✓ WiFi✓ Storage Room✓ Ensuite Bathroom✓ Marble Flooring✓ Double Glazing✓ Courtesy Bus✓ Basement	Furniture <ul style="list-style-type: none">✓ Part Furnished	Kitchen <ul style="list-style-type: none">✓ Fully Fitted	Garden <ul style="list-style-type: none">✓ Communal	Security <ul style="list-style-type: none">✓ Gated Complex✓ Entry Phone	Parking <ul style="list-style-type: none">✓ Underground✓ Garage✓ Covered✓ Private
Utilities <ul style="list-style-type: none">✓ Electricity✓ Drinkable Water	Category <ul style="list-style-type: none">✓ Holiday Homes✓ Investment✓ Luxury				