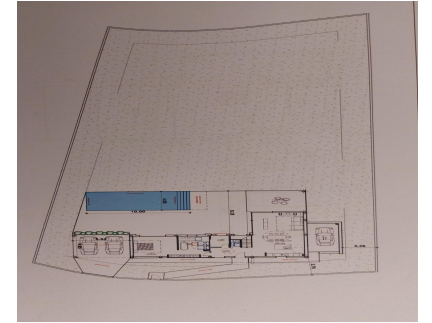


Sales - Plot - La Cala Golf
239.000€

www.arbatestates.com
+34 606 84 36 45
+34 602 51 80 97
info@arbatestates.com



Ref.-ID: R4683115

La Cala Golf

Plot

Community: 216 EUR / year

IBI: 580 EUR / year



1



1



1574 m2

Excellent plot to built your villa (existing project) on a privileged elevated position with breathtaking mountains views. The plot is rather steep with a rectangular shape and 1.575m2 giving the possibility to built 275m2villa (+terraces and underground level). The topographical surveys an the geotechnical study have already been carried out. The plot is being sold under the 7% ITP tax regime (rather than the 21% VAT regime, which represents a saving of more than €30,000). It's no secret that La Cala is one of the finest golf resorts in Spain. Three superb championship courses, each presenting its own unique challenges, a luxury hotel with a state of the art Spa, a splendid Club house, sports facilities, bars and restaurants, with its breathtaking vistas of the stunning Andalusian countryside and to the sea, La Cala golf Resort is worlds away from the hustle and bustle of the coast, yet just 10 minutes to the sea, 20 minutes from Marbella and less than 30 minutes from Malaga airport. Airport: 30 min drive - Marbella: 20 min drive - Puerto Banús: 24 min drive - Golf: Golf front - Beach: 10 min drive - Restaurants/bars: couple of min walk - Shops: 7 min drive - Public transports: 8 min drive Our team works incessantly to make sure that the description and the sales prices for the properties offered on this website are correct and up to date. Notwithstanding, the information contained in this website is subject to errors and omissions, and the properties themselves subject to price changes, prior sale or withdrawal from market. The property market on the Costa del Sol has completely recovered and the good properties are being snapped up fast! We suggest that if you see something you like that fits your budget, contact us as soon as possible to avoid disappointment!

Setting

✔ Close To Golf

Orientation

✔ East

Views

- ✔ Mountain
- ✔ Golf
- ✔ Panoramic
- ✔ Garden

Category

- ✔ Bargain
- ✔ Cheap
- ✔ Investment