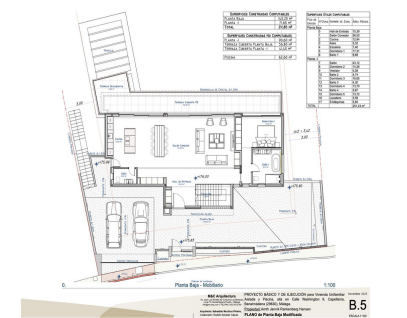


**Sales - House - Benalmadena**  
**3.990.000€**

**www.arbatstates.com**  
**+34 606 84 36 45**  
**+34 602 51 80 97**  
**info@arbatstates.com**



Ref.-ID: R4675537

Benalmadena

House



5



4.5



400 m2



740 m2

CONSTRUCTION IS NEARING COMPLETION! Luxury Villa with panoramic Sea View - finished in Q1 of 2026. Brand-New Luxury Villa with Spectacular Panoramic Sea Views! - La Capellanía - Benalmádena An exceptional newbuild luxury villa in one of the most exclusive areas on the Costa del Sol. Buy now for €3.3M and personalize the villa to your taste — or purchase completed for €3.5M. A unique, top-quality home offering breathtaking sea views, modern design, and the latest technology. About the Villa: - 5 large bedrooms, all with terrace access 4.5 modern bathrooms - Open-plan kitchen with stunning sea views - Living room on each floor - 2.6m floor-to-ceiling heat-protected windows - 3.5m high ceilings - 2.4m premium modern doors - Pergola & fully equipped outdoor kitchen - Heated infinity pool & jacuzzi - Solar panels or option to build a solarium - Built: 400 m<sup>2</sup> - Terraces: 300 m<sup>2</sup> - Plot size: 730 m<sup>2</sup> The Area - La Capellanía: La Capellanía is one of the most desirable residential areas in Benalmádena. - Quiet, green, and well maintained, with only 5 villas on a one-way street, offering privacy and exclusivity. - Less than 5 minutes to restaurants, Carrefour supermarket & Carvajal Beach - 6 minutes to the 5-star Hilton Hotel & Higuero Sports Club, featuring paddle courts, spa, gym, indoor & outdoor pools, beach club & restaurants - Excellent area for families - Close to international & Scandinavian schools - Near Fuengirola & Benalmádena Pueblo - Only 20 minutes from Málaga Airport - Easy Viewings Available Contact us today for more details or to arrange a visit!

- |  |  |   |  |  |  |
|--|--|---|--|--|--|
| <p><b>Setting</b></p> <ul style="list-style-type: none"> <li>✓ Close To Shops</li> <li>✓ Close To Sea</li> <li>✓ Close To Town</li> <li>✓ Close To Schools</li> </ul>  | <p><b>Orientation</b></p> <ul style="list-style-type: none"> <li>✓ South</li> </ul>  | <p><b>Condition</b></p> <ul style="list-style-type: none"> <li>✓ Excellent</li> <li>✓ New Construction</li> </ul> | <p><b>Pool</b></p> <ul style="list-style-type: none"> <li>✓ Private</li> </ul>   | <p><b>Climate Control</b></p> <ul style="list-style-type: none"> <li>✓ Air Conditioning</li> </ul> | <p><b>Views</b></p> <ul style="list-style-type: none"> <li>✓ Sea</li> <li>✓ Mountain</li> <li>✓ Port</li> <li>✓ Panoramic</li> <li>✓ Garden</li> </ul> |
| <p><b>Features</b></p> <ul style="list-style-type: none"> <li>✓ Covered Terrace</li> <li>✓ Fitted Wardrobes</li> <li>✓ Near Transport</li> <li>✓ Private Terrace</li> <li>✓ Satellite TV</li> <li>✓ WiFi</li> <li>✓ Storage Room</li> <li>✓ Utility Room</li> <li>✓ Fiber Optic</li> </ul> | <p><b>Furniture</b></p> <ul style="list-style-type: none"> <li>✓ Optional</li> </ul>   | <p><b>Kitchen</b></p> <ul style="list-style-type: none"> <li>✓ Fully Fitted</li> </ul>                            | <p><b>Garden</b></p> <ul style="list-style-type: none"> <li>✓ Private</li> </ul> | <p><b>Security</b></p> <ul style="list-style-type: none"> <li>✓ Alarm System</li> </ul>            | <p><b>Parking</b></p> <ul style="list-style-type: none"> <li>✓ More Than One</li> <li>✓ Private</li> </ul>   |
| <p><b>Utilities</b></p> <ul style="list-style-type: none"> <li>✓ Electricity</li> </ul>  | <p><b>Category</b></p> <ul style="list-style-type: none"> <li>✓ Holiday Homes</li> <li>✓ Investment</li> <li>✓ Luxury</li> <li>✓ Resale</li> <li>✓ Contemporary</li> </ul> |   |  |  |  |