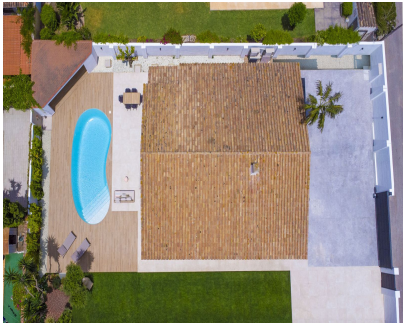


Sales - House - Atalaya  
2.650.000€



Ref.-ID: R5424010

Atalaya

House

IBI: 1,500 EUR / year

Rubbish: 185 EUR / year



4



3



168 m2



1134 m2

Outstanding and recently renovated detached beachside villa. We are presenting an independent Villa, 600m from the seashore, nestled in a generous 1134sqm, in a consolidated residential tranquil area, and with every amenity at hand: Supermarkets, open commercial centres, restaurants, pharmacy, schools, 4\* Hotels in the surroundings ... The Villa boasts a gifted location as it is placed next to Guadalmina, as well as next to Benahavis with its plethora of quality restaurants and close as well to San Pedro and Puerto Banús, the epitome of entertaining, leisure and paramount luxury shops. Furthermore the premises are surrounded by Golf courses, the main one being the famous Real Club de Golf de Guadalmina. Moreover, the house is a short distance from the hectic Guadalmina Open Commercial Centre with its renowned gastronomic and leisure offer, with nation wide famous restaurants. And just 5 minutes away is the jewel of entertainment, fun, and the most exclusive shopping on the Costa del Sol: the renowned Puerto Banús. This light bathed dwelling, welcomes us in its gated plot with a paved parking area suitable for several cars, a Grass area at a side of the house and Ceramic Tile at the pool area. Also within the plot, a built utility room for storage and machinery at one corner and a covered chill out room with a Brabura BBQ and Kitchen plus a dining area close to the pool. The entrance to the dwelling, sheltered with a sleek porch, leads us through a hallway to the core of the building, leaving at the right, two bedrooms with access to the garden that share a bathroom. Once at the living room with a proper dining area, we find at our right a half-open kitchen with top Bosch Appliances; on the left, two en suite bathrooms, also with access to the garden and saltwater pool. A property with Deluxe finishes and appliances: Daikin aerothermal and Air Conditioning; brushed Bronze Hans Grohe bathroom fittings; Saloni Tiling throughout, the mentioned Brabura BBQ, and more ... A house thought, located and equipped for leisure and joy, an example of a holiday home, or also a First Home thanks to its gifted location with all the services at hand. Come and check for yourself the quality finishes, the Scandichic decoration, the light of the premises ... and what's more! It is for sale with all there is currently at the house, all one might need to start living tomorrow.

- |                                                                                                                                                                                                                                                                                                       |                                                                                             |                                                                                                                     |                                                                                                              |                                                                                                                                                                        |                                                                                                                    |
|-------------------------------------------------------------------------------------------------------------------------------------------------------------------------------------------------------------------------------------------------------------------------------------------------------|---------------------------------------------------------------------------------------------|---------------------------------------------------------------------------------------------------------------------|--------------------------------------------------------------------------------------------------------------|------------------------------------------------------------------------------------------------------------------------------------------------------------------------|--------------------------------------------------------------------------------------------------------------------|
| <p><b>Setting</b></p> <ul style="list-style-type: none"> <li>✓ Beachside</li> <li>✓ Close To Sea</li> <li>✓ Urbanisation</li> </ul>                                                                                                                                                                   | <p><b>Orientation</b></p> <ul style="list-style-type: none"> <li>✓ South West</li> </ul>    | <p><b>Condition</b></p> <ul style="list-style-type: none"> <li>✓ Excellent</li> <li>✓ Recently Renovated</li> </ul> | <p><b>Pool</b></p> <ul style="list-style-type: none"> <li>✓ Private</li> </ul>                               | <p><b>Climate Control</b></p> <ul style="list-style-type: none"> <li>✓ Air Conditioning</li> <li>✓ Cold A/C</li> <li>✓ Central Heating</li> <li>✓ Fireplace</li> </ul> | <p><b>Views</b></p> <ul style="list-style-type: none"> <li>✓ Mountain</li> <li>✓ Garden</li> </ul>                 |
| <p><b>Features</b></p> <ul style="list-style-type: none"> <li>✓ Covered Terrace</li> <li>✓ Fitted Wardrobes</li> <li>✓ Near Transport</li> <li>✓ Private Terrace</li> <li>✓ Storage Room</li> <li>✓ Utility Room</li> <li>✓ Ensuite Bathroom</li> <li>✓ Barbeque</li> <li>✓ Double Glazing</li> </ul> | <p><b>Furniture</b></p> <ul style="list-style-type: none"> <li>✓ Fully Furnished</li> </ul> | <p><b>Kitchen</b></p> <ul style="list-style-type: none"> <li>✓ Fully Fitted</li> </ul>                              | <p><b>Garden</b></p> <ul style="list-style-type: none"> <li>✓ Private</li> <li>✓ Easy Maintenance</li> </ul> | <p><b>Parking</b></p> <ul style="list-style-type: none"> <li>✓ More Than One</li> <li>✓ Private</li> </ul>                                                             | <p><b>Utilities</b></p> <ul style="list-style-type: none"> <li>✓ Electricity</li> <li>✓ Drinkable Water</li> </ul> |
| <p><b>Category</b></p> <ul style="list-style-type: none"> <li>✓ Holiday Homes</li> <li>✓ Resale</li> </ul>                                                                                                                                                                                            |                                                                                             |                                                                                                                     |                                                                                                              |                                                                                                                                                                        |                                                                                                                    |