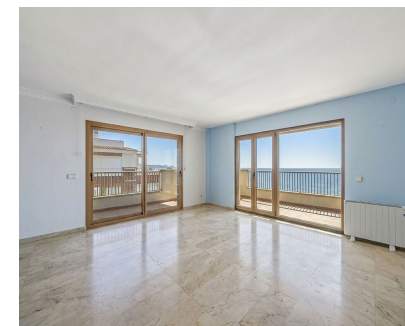


Sales - Apartment - Fuengirola
810.000€



Ref.-ID: R5346979

Fuengirola

Apartment

Community: 1,392 EUR / year

IBI: 827 EUR / year

Rubbish: 56 EUR / year



2



2.5



140 m2

Exclusive Beachfront Penthouse with Panoramic Sea Views in Torreblanca, Fuengirola A rare opportunity to acquire an exclusive frontline beach penthouse in one of the most sought-after areas of Torreblanca, offering breathtaking panoramic views across the Mediterranean coastline and the bay of Fuengirola. Spanning approximately 140m², with an additional 28m² of terraces, this south and south-east facing property is filled with natural light throughout the day. Upon entering, you are welcomed by a spacious hallway with a convenient guest washroom. This leads into a generous living area, where large patio doors on both sides create a seamless connection to the terrace and frame spectacular sea views. The expansive kitchen, with direct access to the side terrace, offers excellent potential to be transformed into a modern open-plan space—perfect for contemporary coastal living. The penthouse features two large double bedrooms, both with en-suite bathrooms. The master bedroom enjoys direct access to a private side terrace, ideal for peaceful mornings overlooking the sea. Located in a well-maintained building of only 28 apartments, residents benefit from communal parking, two elevators per floor, and an entry phone system, ensuring both comfort and convenience. Positioned just steps from the beach, a vibrant selection of bars and restaurants, and the renowned 8km promenade lined with golden sands, this property offers an unbeatable lifestyle by the sea. While the apartment would benefit from modernization, it represents an exceptional investment opportunity and a chance to create a truly stunning bespoke penthouse in a prime beachfront location. Fuengirola is one of the Costa del Sol's most vibrant coastal towns, known for its seven beautiful beaches, lively promenade, and excellent amenities. Attractions such as Bioparc Fuengirola and Sohail Castle add to its charm, while direct train links to Málaga and the airport make it highly accessible.

Setting

- ✓ Beachfront

Orientation

- ✓ South East
- ✓ South

Condition

- ✓ Fair
- ✓ Restoration Required

Views

- ✓ Sea
- ✓ Mountain
- ✓ Beach
- ✓ Panoramic

Features

- ✓ Covered Terrace
- ✓ Lift
- ✓ Near Transport
- ✓ Private Terrace
- ✓ WiFi
- ✓ Ensuite Bathroom
- ✓ Double Glazing
- ✓ Fiber Optic

Furniture

- ✓ Optional

Kitchen

- ✓ Fully Fitted

Security

- ✓ Gated Complex
- ✓ Electric Blinds
- ✓ Entry Phone

Parking

- ✓ Communal

Utilities

- ✓ Electricity
- ✓ Drinkable Water
- ✓ Telephone

Category

- ✓ Beachfront
- ✓ Holiday Homes
- ✓ Investment