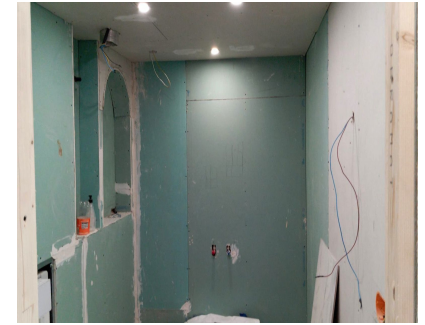


Sales - Apartment - Puerto Banús
520.000€



Ref.-ID: R5296324

Puerto Banús

Apartment



2



1



79 m2

Prime Apartment in the Heart of Puerto Banús, Marbella – Frontline Beach Location with Endless Potential! Seize this exceptional opportunity to own a 79 m² apartment in the glamorous epicentre of Puerto Banús, Marbella's iconic luxury marina on the Costa del Sol – renowned for its opulent yachts, supercars, and celebrity sightings. Steps from the golden sands of Playa de Levante and Playa del Duque, this frontline beach property immerses you in a vibrant lifestyle surrounded by high-end designer boutiques (Louis Vuitton, Gucci, Dolce & Gabbana), upscale shopping centres like Marina Banus and El Corte Inglés, Michelin-starred restaurants, trendy beach clubs, and pulsating nightlife. Perfectly positioned along the famous Golden Mile, it's just a short stroll to gourmet dining, exclusive lounges, and the marina's jet-set atmosphere, with easy access to Marbella's Old Town, world-class golf courses, and attractions like the Fly Blue Catamaran rides. Currently undergoing reforms, this second-hand gem on the second floor (with lift) offers two bedrooms, one bathroom, a kitchen, living room, and a charming small balcony overlooking the bustling main street of Banús – ideal for people-watching in this affluent hotspot. North-facing for cooler, comfortable living, it presents a blank canvas to finish to your personal taste, blending modern luxury with the area's Andalusian charm. Priced at €520,000 – a rare chance to invest in Puerto Banús' high-demand market, whether as a holiday retreat, permanent residence, or lucrative rental property.

| | | | | | |
|--|---|--|--|--|--|
| Setting <div><div></div>Beachfront</div> <div><div></div>Town</div> <div><div></div>Commercial Area</div> <div><div></div>Beachside</div> <div><div></div>Port</div> <div><div></div>Close To Port</div> <div><div></div>Close To Shops</div> <div><div></div>Close To Sea</div> <div><div></div>Close To Town</div> <div><div></div>Close To Schools</div> <div><div></div>Marina</div> <div><div></div>Close To Marina</div> <div><div></div>Front Line Beach Complex</div> | Orientation <div><div></div>North</div> | Condition <div><div></div>Renovation Required</div> | Climate Control <div><div></div>Pre Installed A/C</div> | Views <div><div></div>Garden</div> <div><div></div>Courtyard</div> <div><div></div>Urban</div> <div><div></div>Street</div> | Features <div><div></div>Lift</div> <div><div></div>Near Transport</div> <div><div></div>Access for people with reduced mobility</div> <div><div></div>Marble Flooring</div> <div><div></div>Double Glazing</div> <div><div></div>Near Church</div> |
| Furniture <div><div></div>Not Furnished</div> | Kitchen <div><div></div>Not Fitted</div> | Parking <div><div></div>Street</div> | Category <div><div></div>Beachfront</div> | | |