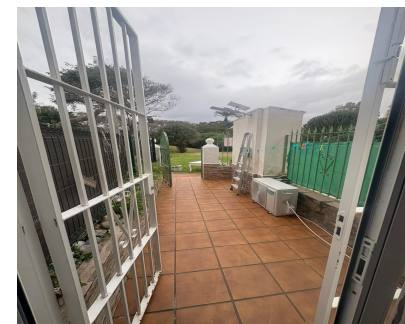
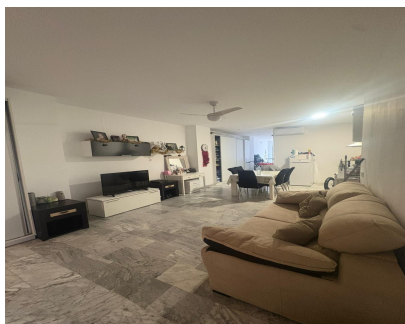


Sales - Apartment - Estepona
205.000€



Ref.-ID: R5289394

Estepona

Apartment

Community: 840 EUR / year



1



1



70 m2

Spacious Frontline Beach Apartment with Private Patio Bahía Dorada, Estepona – Costa del Sol Discover this inviting ground floor apartment on the first line of the beach in the renowned Bahía Dorada urbanisation, a classic Mediterranean-style beachside community in Estepona West spanning over 240,000 m² of lush landscaped grounds with six communal swimming pools open all year round, direct access to the pristine Playa Bahía Dorada beach just steps away, and a tranquil atmosphere inspired by 1970s architecture with low population density for ultimate privacy. Perfectly positioned for coastal living, the property is mere minutes from Estepona's vibrant town centre with its shops, restaurants, and amenities, while offering easy connectivity to Marbella (20-minute drive) and Malaga Airport (45 minutes), making it ideal as a holiday retreat, permanent home, or investment in this family-friendly enclave surrounded by golf courses like Valle Romano and scenic mountain views. Built in 2013 with an efficient B-rated energy certificate for both consumption and emissions, this 70 m² south-east facing apartment boasts an open-plan design flooded with natural light through four large windows, creating a bright and airy space that includes one comfortable bedroom with built-in wardrobes, one modern bathroom, air conditioning for year-round comfort, and a generous 10 m² private patio perfect for outdoor relaxation or al fresco dining. The urbanisation enhances the lifestyle with well-maintained gardens, a lift for easy access despite the exterior ground floor position, and excellent communal areas that promote a sense of community and leisure. Priced at €205,000 – a fantastic opportunity to embrace the Mediterranean dream in this unbeatable frontline beach location!

Setting <div><div>✓</div>Beachfront</div> <div><div>✓</div>Beachside</div> <div><div>✓</div>Close To Port</div> <div><div>✓</div>Close To Shops</div> <div><div>✓</div>Close To Sea</div> <div><div>✓</div>Close To Town</div> <div><div>✓</div>Close To Schools</div> <div><div>✓</div>Close To Marina</div> <div><div>✓</div>Urbanisation</div> <div><div>✓</div>Front Line Beach Complex</div>	Orientation <div><div>✓</div>East</div> <div><div>✓</div>South</div>	Condition <div><div>✓</div>Good</div>	Pool <div><div>✓</div>Communal</div>	Climate Control <div><div>✓</div>Air Conditioning</div>	Views <div><div>✓</div>Garden</div> <div><div>✓</div>Courtyard</div>
Features <div><div>✓</div>Lift</div> <div><div>✓</div>Fitted Wardrobes</div> <div><div>✓</div>Near Transport</div> <div><div>✓</div>Private Terrace</div> <div><div>✓</div>WiFi</div> <div><div>✓</div>Ensuite Bathroom</div> <div><div>✓</div>Access for people with reduced mobility</div> <div><div>✓</div>Marble Flooring</div> <div><div>✓</div>Double Glazing</div> <div><div>✓</div>Fiber Optic</div>	Furniture <div><div>✓</div>Fully Furnished</div>	Kitchen <div><div>✓</div>Fully Fitted</div>	Garden <div><div>✓</div>Communal</div>	Security <div><div>✓</div>Gated Complex</div>	Parking <div><div>✓</div>Street</div> <div><div>✓</div>Communal</div>