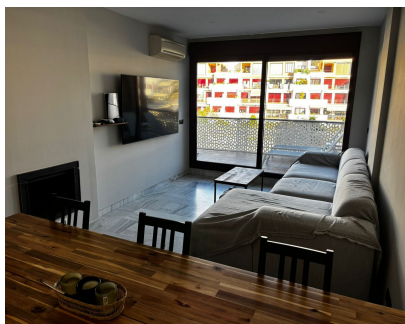


**Sales - Apartment - Benahavís**  
**285.000€**



**Ref.-ID: R5258839**

**Benahavís**

**Apartment**

**Community: 2,040 EUR / year**



**1**



**1**



**92 m2**

Charming 1-Bedroom Apartment in Parque Botánico Urbanisation – Estepona, with Resort Amenities Discover this impeccable 1-bedroom apartment in the prestigious Parque Botánico urbanisation, a luxurious gated community in Estepona on the sun-drenched Costa del Sol – renowned for its serene location between the mountains and sea, offering resort-style living with lush botanical gardens, multiple swimming pools (including heated indoor and outdoor options), a state-of-the-art gym, spa with sauna and jacuzzi, tennis courts, and 24-hour security. This prime spot provides easy access to pristine beaches (10-15 minutes), world-class golf courses like Los Flamingos, international schools, supermarkets, and the A-7 for quick trips to Puerto Banús or Málaga Airport – ideal for year-round living or investment in Estepona's thriving 2025 market, where similar properties average €300,000-€450,000 with strong rental yields of 5-7% amid growing demand for eco-friendly resorts. Spanning 92 m² of built space on a mezzanine exterior floor with convenient lift access and desirable south-east orientation for abundant natural light, this well-maintained residence boasts a functional layout: one spacious bedroom with fitted wardrobes, a modern bathroom, a living-dining room with fully equipped kitchen, and a generous 20 m² terrace perfect for relaxation or al fresco dining. Premium features include air conditioning throughout, individual electric heating, and a garage space equipped with electric car charging installation, plus a 5 m² storage room – all enhancing everyday convenience. The urbanisation's exceptional amenities include expansive gardens, pools, and a welcoming community atmosphere, ensuring low-maintenance luxury. This turnkey property is a rare find for comfortable living or rentals – contact us today to arrange a viewing!

|                                                                                                                                                                                                                                                                                                                                                                                                                                                                                                                                                                                                                      |                                                                                           |                                                                               |                                                                                                                                    |                                                                                                                                   |                                                                                                                                    |
|----------------------------------------------------------------------------------------------------------------------------------------------------------------------------------------------------------------------------------------------------------------------------------------------------------------------------------------------------------------------------------------------------------------------------------------------------------------------------------------------------------------------------------------------------------------------------------------------------------------------|-------------------------------------------------------------------------------------------|-------------------------------------------------------------------------------|------------------------------------------------------------------------------------------------------------------------------------|-----------------------------------------------------------------------------------------------------------------------------------|------------------------------------------------------------------------------------------------------------------------------------|
| <b>Setting</b> <ul style="list-style-type: none"><li>✓ Close To Golf</li><li>✓ Close To Town</li><li>✓ Close To Schools</li><li>✓ Urbanisation</li></ul>                                                                                                                                                                                                                                                                                                                                                                                                                                                             | <b>Orientation</b> <ul style="list-style-type: none"><li>✓ East</li><li>✓ South</li></ul> | <b>Condition</b> <ul style="list-style-type: none"><li>✓ Excellent</li></ul>  | <b>Pool</b> <ul style="list-style-type: none"><li>✓ Communal</li><li>✓ Indoor</li><li>✓ Heated</li><li>✓ Children`s Pool</li></ul> | <b>Climate Control</b> <ul style="list-style-type: none"><li>✓ Air Conditioning</li><li>✓ Fireplace</li></ul>                     | <b>Views</b> <ul style="list-style-type: none"><li>✓ Garden</li><li>✓ Courtyard</li><li>✓ Lake</li></ul>                           |
| <b>Features</b> <ul style="list-style-type: none"><li>✓ Covered Terrace</li><li>✓ Lift</li><li>✓ Fitted Wardrobes</li><li>✓ Near Transport</li><li>✓ Private Terrace</li><li>✓ Solarium</li><li>✓ Satellite TV</li><li>✓ WiFi</li><li>✓ Gym</li><li>✓ Sauna</li><li>✓ Games Room</li><li>✓ Paddle Tennis</li><li>✓ Tennis Court</li><li>✓ Storage Room</li><li>✓ Ensuite Bathroom</li><li>✓ Access for people with reduced mobility</li><li>✓ Marble Flooring</li><li>✓ Jacuzzi</li><li>✓ Barbeque</li><li>✓ Double Glazing</li><li>✓ 24 Hour Reception</li><li>✓ Restaurant On Site</li><li>✓ Fiber Optic</li></ul> | <b>Furniture</b> <ul style="list-style-type: none"><li>✓ Optional</li></ul>               | <b>Kitchen</b> <ul style="list-style-type: none"><li>✓ Fully Fitted</li></ul> | <b>Garden</b> <ul style="list-style-type: none"><li>✓ Communal</li></ul>                                                           | <b>Security</b> <ul style="list-style-type: none"><li>✓ Gated Complex</li><li>✓ Alarm System</li><li>✓ 24 Hour Security</li></ul> | <b>Parking</b> <ul style="list-style-type: none"><li>✓ Underground</li><li>✓ Garage</li><li>✓ Communal</li><li>✓ Private</li></ul> |