

Sales - Plot - Estepona
710.000€



Ref.-ID: R5061619



535 m2



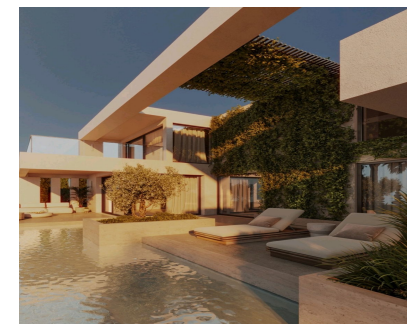
Estepona



1140 m2



Plot



VILLA ON THE NEW GOLDEN MILE Location: Cancelada, Estepona, New Golden Mile Status: Sea-view plot with granted building license and custom-designed villa project AN EXCEPTIONAL OPPORTUNITY TO BUILD YOUR DREAM VILLA Welcome to Villa La Galatea, a project that blends modern architectural elegance with unbeatable Mediterranean views. Set on a generous 1,140 m² plot with a fully approved building license, this offering goes beyond land — it is a turnkey solution to create a luxurious lifestyle in one of the Costa del Sol's most sought-after locations. THE VILLA PROJECT Built area: 535 m² Levels: 2 floors + basement Bedrooms / Bathrooms: 4 / 4 Private Pool Covered Parking for 2 Cars Expansive Sea-View Terraces Energy Rating: Class B or higher Design: Contemporary, nature-integrated architecture The villa's open-plan layout, full-height windows, and strategic orientation maximize natural light and panoramic views. Premium materials and high-efficiency systems ensure long-term value and sustainable comfort. LOCATION & LIFESTYLE Cancelada is a private, secure residential community on the prestigious New Golden Mile. It boasts modern infrastructure, direct access to the A7 highway, and is just 2 km from the beach, 10 minutes from Puerto Banús, and surrounded by golf courses, fine hotels, and tennis clubs. 0 km to golf courses 2 km to beach & promenade 4 km to Estepona Hospital 12 km to Estepona town 18 km to Marbella Close to Anantara Resort, METT Hotel, and Bel Air Tennis School YOUR HOME - YOUR STYLE Customize the villa to your taste — from layout and architecture to finishes and furnishings. Work with our experienced architects and designers or bring your own vision to life. This tailored approach ensures market value and personal comfort. TURNKEY SOLUTION Our expert development team provides full-service project management — from permits and construction to final delivery. You enjoy a seamless, hassle-free experience with full transparency and professional support. SMARTER INVESTMENT - LOWER TAXES Save up to 30% compared to buying a finished villa Lower property transfer taxes on land vs. completed homes Greater flexibility in managing construction costs Higher resale potential due to custom design

Setting	Orientation	Condition	Views
✓ Close To Town	✓ South	✓ Excellent	✓ Sea
✓ Close To Schools			✓ Mountain
			✓ Golf
			✓ Panoramic
			✓ Ski