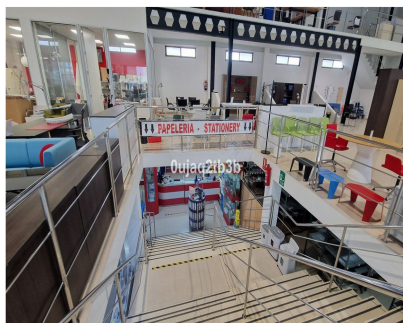


**Sales - Commercial - Marbella**  
**6.000.000€**



**Ref.-ID: R5043529**



**8**



**Marbella**



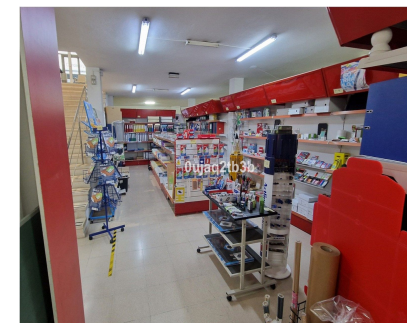
**4**



**2738 m2**



**Commercial**



Logistics-Focused Industrial Warehouse in Marbella’s Business Park – 2,738 m² Across 4 Levels This industrial warehouse, located in Marbella’s established business and industrial hub, offers an outstanding opportunity for logistics companies seeking a strategically located, well-designed facility tailored for efficient operations. With a total built area of **\*\*2,738 m² spread over four levels\*\***, this property provides the flexibility, accessibility, and infrastructure essential for modern logistics management. Key Features Total area: 2,738 m² Floors: 4 Purpose-built layout: Large, open-plan spaces designed to accommodate warehousing, cross-docking, order preparation, and logistics offices Robust infrastructure: Modern, solid construction featuring vehicle-accessible floors and a heavy-duty freight lift that services all levels Strategic Location for Distribution Located in Marbella’s industrial estate, this warehouse benefits from **\*\*excellent connectivity to major transport routes\*\***, including highways and key logistics corridors across the Costa del Sol. This location allows for faster dispatch, optimized delivery routes, and seamless integration with regional and national supply chains. Designed for Logistics Operations Specifically configured to support logistics and supply chain activities, the property offers: \* High ceilings ideal for racking and vertical storage systems \* Ample loading and unloading bays \* Direct truck and trailer access \* Versatile interior distribution to streamline operational flows, from inbound reception to outbound dispatch \* Potential to establish integrated logistics offices or control centers Ideal for Logistics and Fulfillment Companies Whether your focus is on warehousing, distribution, e-commerce fulfillment, or supply chain services, this facility offers the spatial efficiency and operational capacity to grow and scale your business. This 2,738 m² logistics-ready warehouse in Marbella’s premier business park represents a strategic asset for logistics companies seeking to strengthen their presence on the Costa del Sol. With its adaptable space, robust access infrastructure, and excellent location, it is ideally positioned to serve as a central logistics hub or regional distribution center.

<b>Setting</b> <ul style="list-style-type: none"><li>✓ Town</li><li>✓ Commercial Area</li><li>✓ Close To Shops</li><li>✓ Close To Sea</li><li>✓ Close To Town</li></ul>	<b>Orientation</b> <ul style="list-style-type: none"><li>✓ East</li><li>✓ West</li></ul>	<b>Condition</b> <ul style="list-style-type: none"><li>✓ Excellent</li></ul>	<b>Climate Control</b> <ul style="list-style-type: none"><li>✓ Air Conditioning</li></ul>	<b>Views</b> <ul style="list-style-type: none"><li>✓ Urban</li></ul>	<b>Features</b> <ul style="list-style-type: none"><li>✓ Lift</li><li>✓ Near Transport</li><li>✓ Access for people with reduced mobility</li><li>✓ Basement</li></ul>
<b>Furniture</b> <ul style="list-style-type: none"><li>✓ Optional</li></ul>	<b>Kitchen</b> <ul style="list-style-type: none"><li>✓ Partially Fitted</li></ul>	<b>Security</b> <ul style="list-style-type: none"><li>✓ Electric Blinds</li><li>✓ Alarm System</li></ul>	<b>Parking</b> <ul style="list-style-type: none"><li>✓ Garage</li><li>✓ Private</li></ul>	<b>Utilities</b> <ul style="list-style-type: none"><li>✓ Electricity</li><li>✓ Drinkable Water</li><li>✓ Telephone</li></ul>	<b>Category</b> <ul style="list-style-type: none"><li>✓ Investment</li><li>✓ Resale</li></ul>