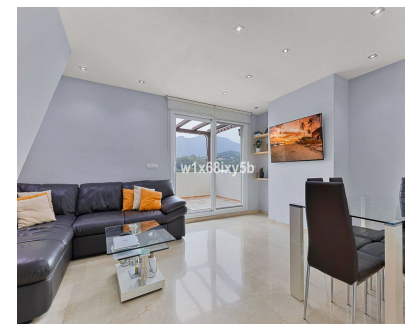


Sales - Apartment - Estepona
390.000€



Ref.-ID: R5012896

Estepona

Apartment

Community: 1,212 EUR / year

IBI: 431 EUR / year

Rubbish: 135 EUR / year



2



2



145 m2

Exclusive Duplex Penthouse in the Heart of Estepona Discover this spectacular duplex penthouse of 145 m² spread across two levels, featuring an impressive 40 m² terrace where you can enjoy panoramic views of the sea, the mountains, the garden, and even Gibraltar. Strategically located between Málaga and Gibraltar airports, this home perfectly combines a cosmopolitan essence with authentic Andalusian charm. The property stands out for its modern, bright design and exceptional qualities: built-in wardrobes, electric blinds, garage and storage room, as well as an elevator, landscaped areas, and solar panels that enhance energy efficiency and reduce utility costs. The residential complex also offers a swimming pool and a peaceful environment, ideal for relaxation and unwinding. The master bedroom includes a spacious walk-in closet, en-suite bathroom, and direct access to a spectacular 30 m² solarium, from which you can enjoy unparalleled views of Estepona’s old town, the sea, Gibraltar, Africa, and the mountains. Located just a 5-minute walk from the town center, the beach, shops, schools, and leisure areas, this penthouse is perfect both for families and for those seeking an exclusive residence by the Mediterranean. Nearby you’ll find up to 4 educational centers, including Sierra Bermeja School (a 6-minute walk), Antonio Machado Public School (8 minutes), and San Lorenzo and San Isidro nurseries (just 9 minutes away), making this property an ideal choice for families. Property-related expenses: IBI: €431 / year Community fees: €101 / month Waste tax: €135 / year Estepona offers the perfect combination of quality of life, convenience, nature, and culture. Don’t miss this opportunity! Contact us for more information and schedule your viewing today.

Setting <div><div></div>Urbanisation</div>	Orientation <div><div></div>North</div> <div><div></div>East</div> <div><div></div>South</div> <div><div></div>West</div>	Condition <div><div></div>Good</div>	Pool <div><div></div>Communal</div>	Climate Control <div><div></div>Air Conditioning</div>	Views <div><div></div>Pool</div>
Features <div><div></div>Lift</div> <div><div></div>Near Transport</div> <div><div></div>Private Terrace</div> <div><div></div>Solarium</div>	Kitchen <div><div></div>Fully Fitted</div>	Garden <div><div></div>Communal</div>	Parking <div><div></div>Garage</div>	Category <div><div></div>Investment</div> <div><div></div>Resale</div>	