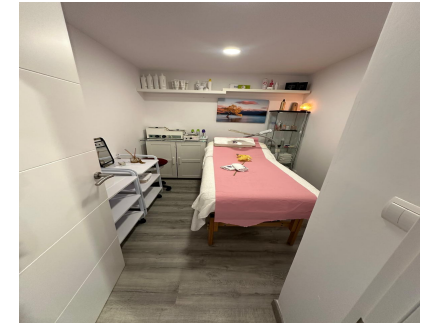


Sales - Commercial - Puerto Banús
1.390.000€



Ref.-ID: R4966312

Puerto Banús

Commercial

Community: 696 EUR / year

IBI: 950 EUR / year



1.5



92 m2

Situated in the prestigious Marina Banus area of Puerto Banus, Marbella, this commercial property offers an exceptional opportunity for businesses seeking a prime location. Spanning 92.5 square metres, this business space is designed to cater to a variety of professional needs, combining functionality with a modern aesthetic. The property is in excellent condition, with a layout that includes a fully equipped bathroom and an additional toilet, ensuring convenience for both staff and clients. The interior benefits from air conditioning and central heating, providing a comfortable environment throughout the year. Glass doors enhance the space with natural light while offering a contemporary touch to the overall design. The property is fully furnished, allowing for immediate use without the need for additional investment. Strategically positioned, the business space is surrounded by a wealth of amenities. Its proximity to transport links, shops, schools, and the town centre ensures ease of access for employees and customers alike. Additionally, the property is located near the port, sea, and beach, making it an attractive location for businesses catering to tourists or locals. For those seeking leisure activities, the property is also close to golf courses and children's playgrounds, adding to its appeal. The street view further enhances the visibility of the property, making it an ideal choice for businesses that rely on foot traffic. Whether you are looking to establish a new venture or expand an existing one, this commercial space in Marina Banus offers an unparalleled combination of location, features, and convenience.

- Setting**
- ✓ Close To Port
 - ✓ Close To Shops
 - ✓ Close To Sea
 - ✓ Close To Town
 - ✓ Close To Schools

- Condition**
- ✓ Excellent
 - ✓ Good

- Climate Control**
- ✓ Air Conditioning
 - ✓ Central Heating

- Views**
- ✓ Street

- Features**
- ✓ Near Transport

- Furniture**
- ✓ Fully Furnished