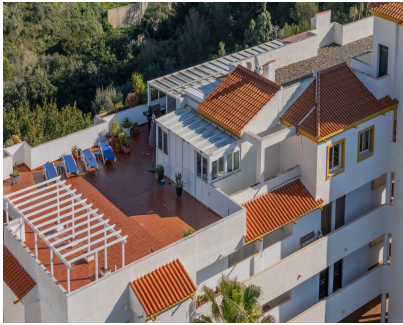


Sales - Apartment - Benalmadena
695.000€



Ref.-ID: R4955506

Benalmadena

Apartment

Community: 1,044 EUR / year



3



2



90 m2

Stunning Penthouse with Exceptional Terraces and Panoramic Views near Benalmádena Pueblo This penthouse offers a rare combination of spaciousness, privacy, and breathtaking views of both the Mediterranean Sea and the beautiful Andalusian mountains. With 90 m² of indoor living space and a massive 219 m² of terrace area, this home is designed to enjoy life under the open sky. The property features three generous bedrooms, two modern bathrooms, a newer Designa kitchen and a large, bright aluminum sunroom with double glazed windows, a total 24 m². The vast terrace wraps around the apartment, offering endless possibilities for relaxation, sunbathing, and outdoor dining with stunning views. - A morning terrace 6 m² - A sheltered terrace 23 m² - A large terrace with 360 degree sun view, total 154 m² The property offers 2 private parking spaces underground and 1 storage room, located next to the elevator that takes you directly to the apartment. Adjacent to the terrasse you find a laundry room 12 m², which includes new washing machine/dryer and workshop with many cupboards and table space. The property is located in an urbanization with 2 communal pools and a padel court, and is just a short walk to the charming Benalmádena Pueblo, where you'll find cozy cafés, restaurants, and shops. This is a unique opportunity to own a penthouse with exceptional outdoor space, perfect for those who want to combine comfortable living with the best of Costa del Sol's climate and lifestyle. Contact us today for more information or to schedule a viewing.

- Setting**
- ✓ Close To Schools
 - ✓ Urbanisation

- Condition**
- ✓ Excellent

- Pool**
- ✓ Communal

- Climate Control**
- ✓ Air Conditioning

- Views**
- ✓ Sea
 - ✓ Mountain
 - ✓ Panoramic

- Features**
- ✓ Lift
 - ✓ Private Terrace
 - ✓ Solarium
 - ✓ Paddle Tennis
 - ✓ Storage Room
 - ✓ Ensuite Bathroom

- Furniture**
- ✓ Not Furnished

- Garden**
- ✓ Communal

- Security**
- ✓ Gated Complex

- Parking**
- ✓ Underground

- Category**
- ✓ Resale
 - ✓ Contemporary