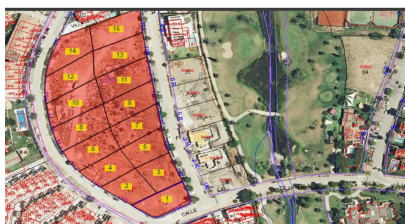


Sales - Plot - Estepona
6.970.000€



Ref.-ID: R4252657

Estepona

Plot



3900 m2



9751 m2

Estepona, INVESTOR ALERT 15 plots for villas in the same area, Bsic PROYECT AND LICENSE APPROVED for 11 of these plots Between Puerto Banus and Estepona town, 15 plots for sale, you can build 15 individual villas, located in the exclusive urbanization of El Campanario, next to a 9-hole golf course as well as a clubhouse that offers a restaurant, gym, spa and all kinds of services nearby. Ideally positioned on the second line of golf and surrounded by high-end villas and luxury apartments, this prime land offers a buildability of 0.4%. The plots range from 550 to 750 m², with a total land area of 9,751 m² and a buildable area of 3,900 m²—perfect for a high-end residential development. With a competitive average sale price and a list of interested buyers already in place, this is a prime opportunity for a swift and profitable development. Don't miss out on this rare investment in one of southern Spain's most desirable locations. Situated in the sought-after Campanario area, this location is unmatched—just 3 km from the A-340 road and 8 km from Puerto Banus, Marbella. 11 out of the 15 plots already with a valid building license for super-commercial villas, allowing for an immediate start to construction. The area is fully urbanized with essential infrastructure in place, including water, electricity, sewage, public lighting, and sidewalks, ensuring convenience and a high standard of living. There is a wide variety of luxury properties for sale that you can find on the New Golden Mile in Estepona, from prestigious frontline beach developments, exclusive villas, golf flats, five star hotels such as Las Dunas or Kempinski and luxury beachfront penthouses. The New Golden Mile is considered one of the best luxury destinations in Europe for several reasons: its climate, with more than 300 days of sunshine, its Mediterranean gastronomy and its location; 30 minutes by car to Gibraltar, 2 hours from Africa by boat and 2 and a half hours to the ski resort of Sierra Nevada in Granada Contact us today for more details or to schedule a visit!

Setting

- ✓ Close To Town
- ✓ Close To Schools

Orientation

- ✓ East
- ✓ South East
- ✓ South
- ✓ South West
- ✓ West

Condition

- ✓ Excellent

Garden

- ✓ Communal
- ✓ Private