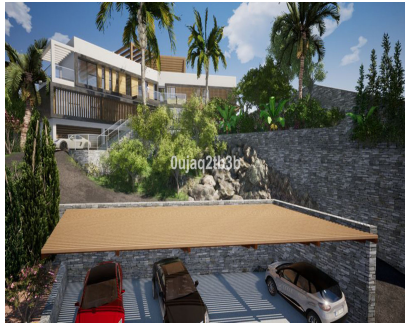
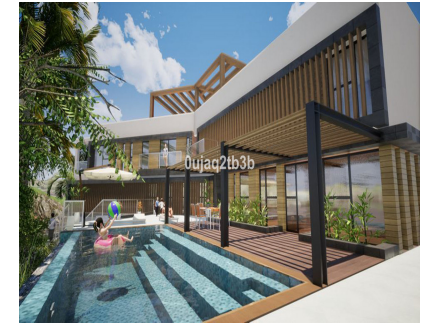


# Sales - Plot - El Rosario

## 975.000€




**Ref.-ID: R3888871**

**El Rosario**

**Plot**

**IBI: 1,260 EUR / year**

 **1704 m2**

Magnificent plot in a great location and walking distance to Sports center, commercial center, services and amenities. There is a project to build a very large house taking advantage of the slope in the plot. South-West oriented. El Rosario is a consolidated residential area with high demand for plots and properties.

### Setting

- ✓ Close To Shops
- ✓ Urbanisation

### Orientation

- ✓ West

### Views

- ✓ Mountain
- ✓ Panoramic
- ✓ Garden
- ✓ Street

### Utilities

- ✓ Electricity
- ✓ Drinkable Water
- ✓ Telephone

### Category

- ✓ Golf
- ✓ Investment
- ✓ Resale
- ✓ With Planning Permission