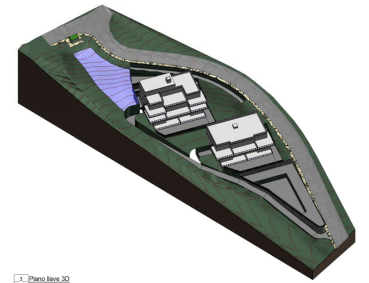
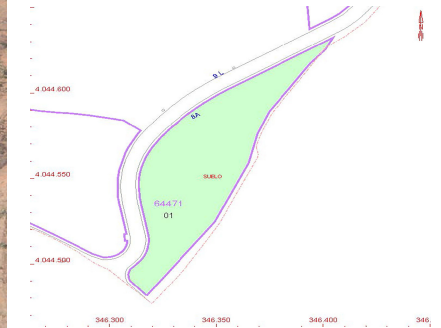


## Sales - Plot - La Cala Golf

### 1.500.000€



1. Data Area 3D



Ref.-ID: R3848254

La Cala Golf

Plot



1704 m2



4446 m2

Investment plot of 4.446m<sup>2</sup> with buildable 1.704,06m<sup>2</sup> and maximum of 20 units. Residential Plot, La Mairena, Costa del Sol. Garden/Plot 4446 m<sup>2</sup>. Setting : Suburban, Country, Mountain Pueblo, Close To Golf, Close To Sea, Close To Town, Close To Schools, Urbanisation. Orientation : East, South, South West. Condition : New Construction. Views : Sea, Mountain, Panoramic. Utilities : Electricity, Drinkable Water.

#### Setting

- ✓ Suburban
- ✓ Close To Golf
- ✓ Close To Town
- ✓ Urbanisation

#### Orientation

- ✓ East
- ✓ South
- ✓ South West

#### Condition

- ✓ New Construction

#### Views

- ✓ Sea
- ✓ Mountain
- ✓ Panoramic

#### Utilities

- ✓ Electricity
- ✓ Drinkable Water